

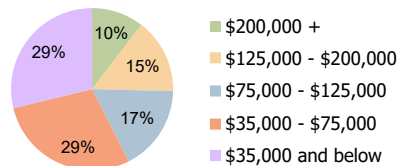
| Whitaker Square Winston-Salem, NC | 1 Mile Radius | 3 Mile Radius | 5 Mile Radius |
|--------------------------------------|---------------|---------------|---------------|
|--------------------------------------|---------------|---------------|---------------|

Current Year Demographics

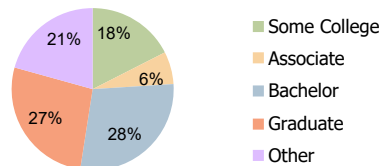
| | | | |
|---|-----------|-----------|-----------|
| Current Population | 6,677 | 58,293 | 153,461 |
| Total Daytime Pop | 9,341 | 87,039 | 239,722 |
| Workplace Pop | 3,123 | 41,791 | 126,255 |
| Average Household Income | \$116,882 | \$105,369 | \$81,753 |
| Average Disposable Income | \$84,582 | \$74,243 | \$60,286 |
| Total Households | 2,970 | 25,029 | 64,773 |
| Median Home Value | \$284,519 | \$284,675 | \$198,530 |
| College (4+) | 64.2% | 55.3% | 41.8% |
| Total Consumer Spending/Capita (Weekly) | \$370 | \$355 | \$337 |
| Population per Household | 2.13 | 2.01 | 2.47 |
| % of Households with Children | 20.1% | 23.3% | 25.2% |

2025 Demographic Projections

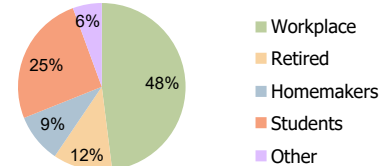
| | | | |
|---|-------|--------|---------|
| Projected Population | 6,743 | 59,230 | 157,570 |
| Projected 5 Year Annual Growth Rate (Pop) | 0.2% | 0.3% | 0.5% |



Household Income (3-Mile)



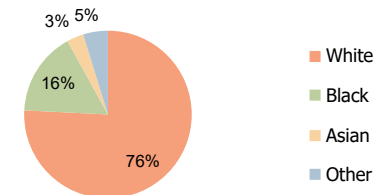
Education (3-Mile)



Daytime Population (3-Mile)

Hispanic Ethnicity

6% Hispanic | 94% Non Hispanic



Race (3-Mile)

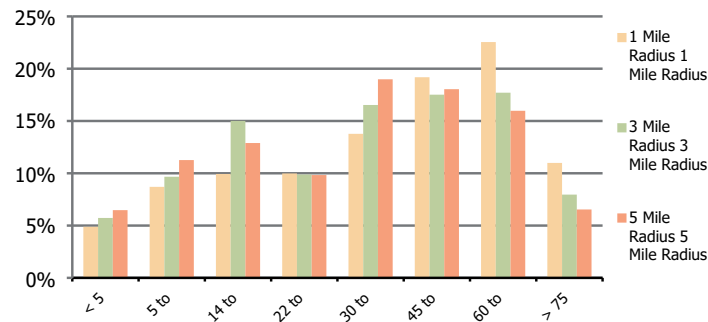
Whitaker Square
Winston-Salem, NC

1 Mile Radius

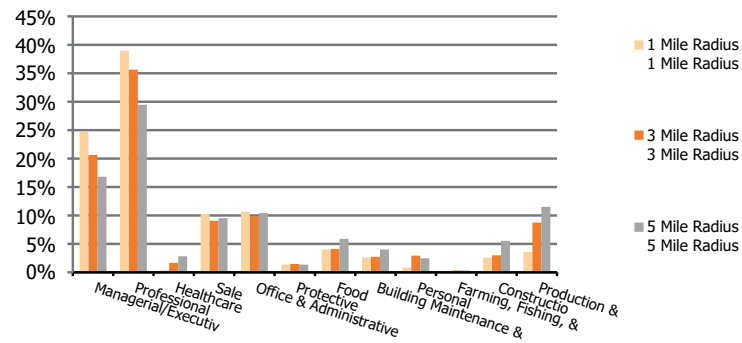
3 Mile Radius

5 Mile Radius

Population by Age Range



Occupation



| | | | | |
|-------------------|---------------------------------------|-------|--------|---------|
| Population | Current Estimated Population | 6,677 | 58,293 | 153,461 |
| | 2010 Census Population | 6,549 | 55,914 | 143,624 |
| | 2000 Census Population | 6,598 | 52,674 | 132,233 |
| | Historical Annual Growth 2000 to 2010 | -0.1% | 0.6% | 0.8% |
| | Estimated Annual Growth 2010 to 2020 | 0.2% | 0.4% | 0.6% |
| | Projected Annual Growth 2020 to 2025 | 0.2% | 0.3% | 0.5% |
| Ethnic | Hispanic or Latino Population | 4% | 6% | 11% |
| | Non Hispanic or Latino Population | 96% | 94% | 89% |
| Race | White | 84.5% | 75.8% | 60.5% |
| | Black or African American | 10.6% | 16.2% | 28.8% |
| | Asian & Pacific Islander | 2.0% | 3.2% | 2.7% |
| | Other Races | 2.9% | 4.8% | 8.0% |