



Demographic Summary Report

2000, 2010 Census, 2020 Estimates & 2025 Projections
 Calculated using TAS Retrieval

Wynnewood Village Dallas, TX	1 Mile Radius	3 Mile Radius	5 Mile Radius
---------------------------------	---------------	---------------	---------------

Current Year Demographics

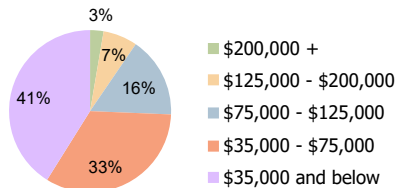
Current Population	21,351	160,565	318,748
Total Daytime Pop	14,635	148,674	434,638
Workplace Pop	3,488	45,182	200,965
Average Household Income	\$60,579	\$60,880	\$64,296
Average Disposable Income	\$50,643	\$50,980	\$52,633
Total Households	5,974	50,292	106,890
Median Home Value	\$135,264	\$140,613	\$140,361
College (4+)	11.5%	14.7%	16.5%
Total Consumer Spending/Capita (Weekly)	\$342	\$342	\$342
Population per Household	2.13	2.01	2.47
% of Households with Children	39.0%	32.9%	29.3%

2025 Demographic Projections

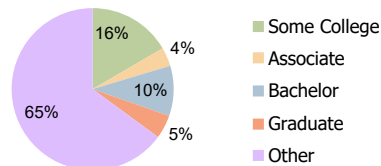
Projected Population	21,600	163,907	333,219
Projected 5 Year Annual Growth Rate (Pop)	0.2%	0.4%	0.9%

Hispanic Ethnicity

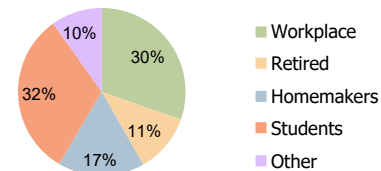
63% Hispanic | 37% Non Hispanic



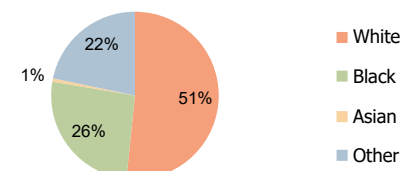
Household Income (3-Mile)



Education (3-Mile)



Daytime Population (3-Mile)



Race (3-Mile)

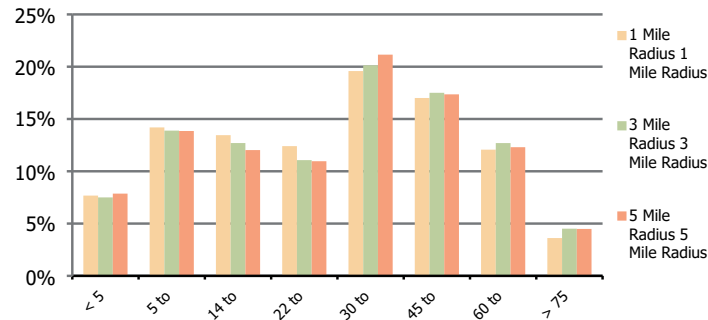
Wynnewood Village
Dallas, TX

1 Mile Radius

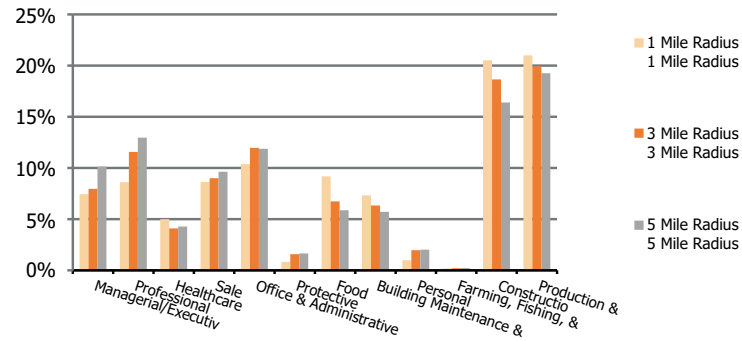
3 Mile Radius

5 Mile Radius

Population by Age Range



Occupation



Population	Current Estimated Population	21,351	160,565	318,748
	2010 Census Population	20,510	154,309	290,501
	2000 Census Population	21,069	164,676	284,822
	Historical Annual Growth 2000 to 2010	-0.3%	-0.6%	0.2%
	Estimated Annual Growth 2010 to 2020	0.4%	0.4%	0.9%
	Projected Annual Growth 2020 to 2025	0.2%	0.4%	0.9%
Ethnic	Hispanic or Latino Population	74%	63%	53%
	Non Hispanic or Latino Population	26%	37%	47%
Race	White	58.8%	51.6%	46.4%
	Black or African American	18.3%	26.0%	34.4%
	Asian & Pacific Islander	0.3%	0.7%	0.9%
	Other Races	22.6%	21.7%	18.3%