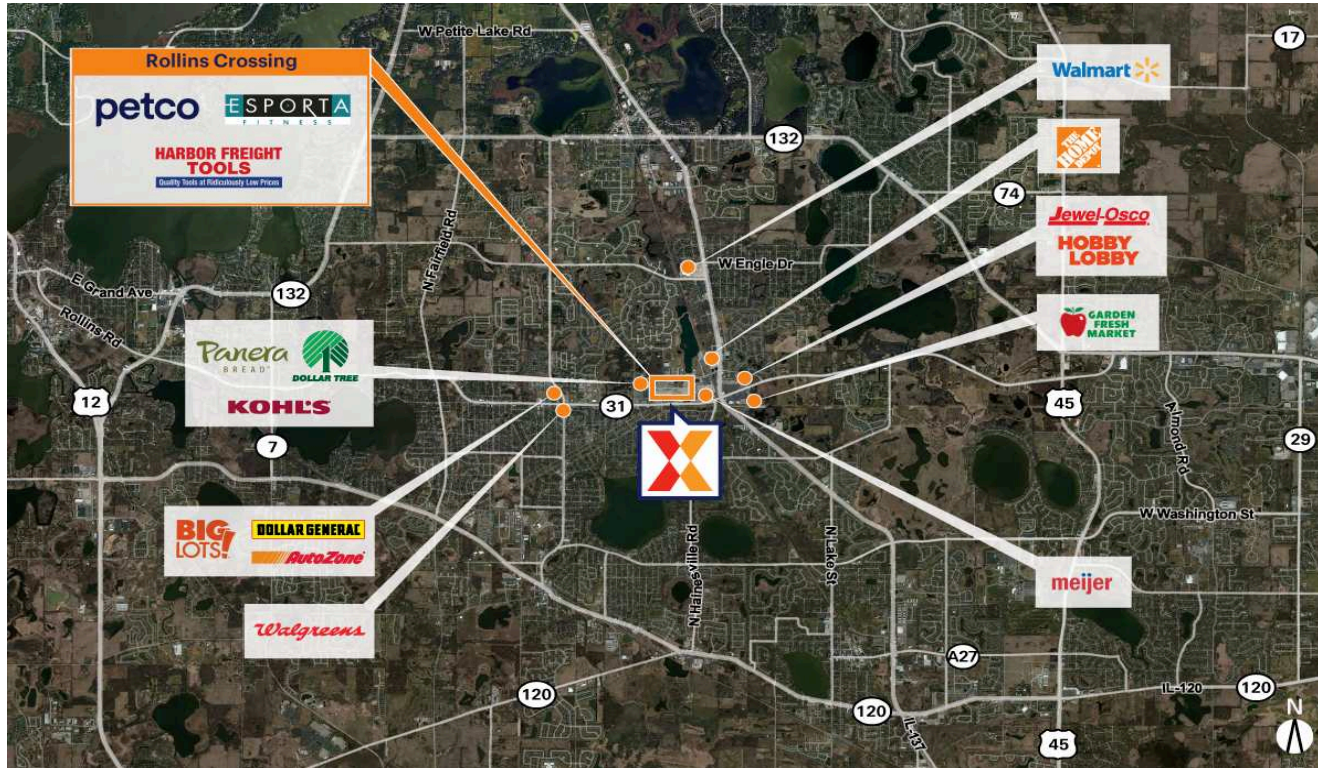


# Rollins Crossing

Chicago-Naperville-Elgin, IL-IN

42.3809, -88.0711

422-550 East Rollins Road | Round Lake Beach, IL 60073-1336



Center Size: 120,292 SF



Demographics	1 Mile	3 Mile	5 Mile
	12,778	73,726	147,636
	4,035	24,820	52,173
	\$96,959	\$98,864	\$108,171

Features a diverse tenant mix of national retailers including Esporta Fitness, Harbor Freight Tools, & Petco.

Strong visibility and accessibility from Route 31, the primary east/west arterial

Retail space surrounded by a population of 73,000+ with average household income of \$98,000+ within 3 miles

Pad site available for up to 30,000 SF

# Rollins Crossing

Chicago-Naperville-Elgin, IL-IN

42.3809, -88.0711

422-550 East Rollins Road | Round Lake Beach, IL 60073-1336



## Available Space

200	7,200 SF
510B	3,499 SF

## Current Retailers

N.A.P.	N.A.P.	0 SF
N.A.P.1	Dental Care	0 SF
N.A.P.2	AT&T	0 SF
N.A.P.3	Fifth Third Bank	0 SF
N.A.P.4	Panda Express	0 SF
N.A.P.5	N.A.P.	0 SF
N.A.P.6	Buffalo Wild Wings	0 SF
202	Petco	11,040 SF
206	Asian Grill Sushi Buffet	13,800 SF
300	Esporta Fitness	44,794 SF
502	Armed Forces Recruiting	1,338 SF
504	Jessie Maye's Ice Cream	1,310 SF
505	Ship We Ship	1,200 SF
506	Great Clips	1,400 SF
510	GNC	1,870 SF
510A	Jersey Mike's Subs	1,758 SF
800	Harbor Freight	21,083 SF



4155