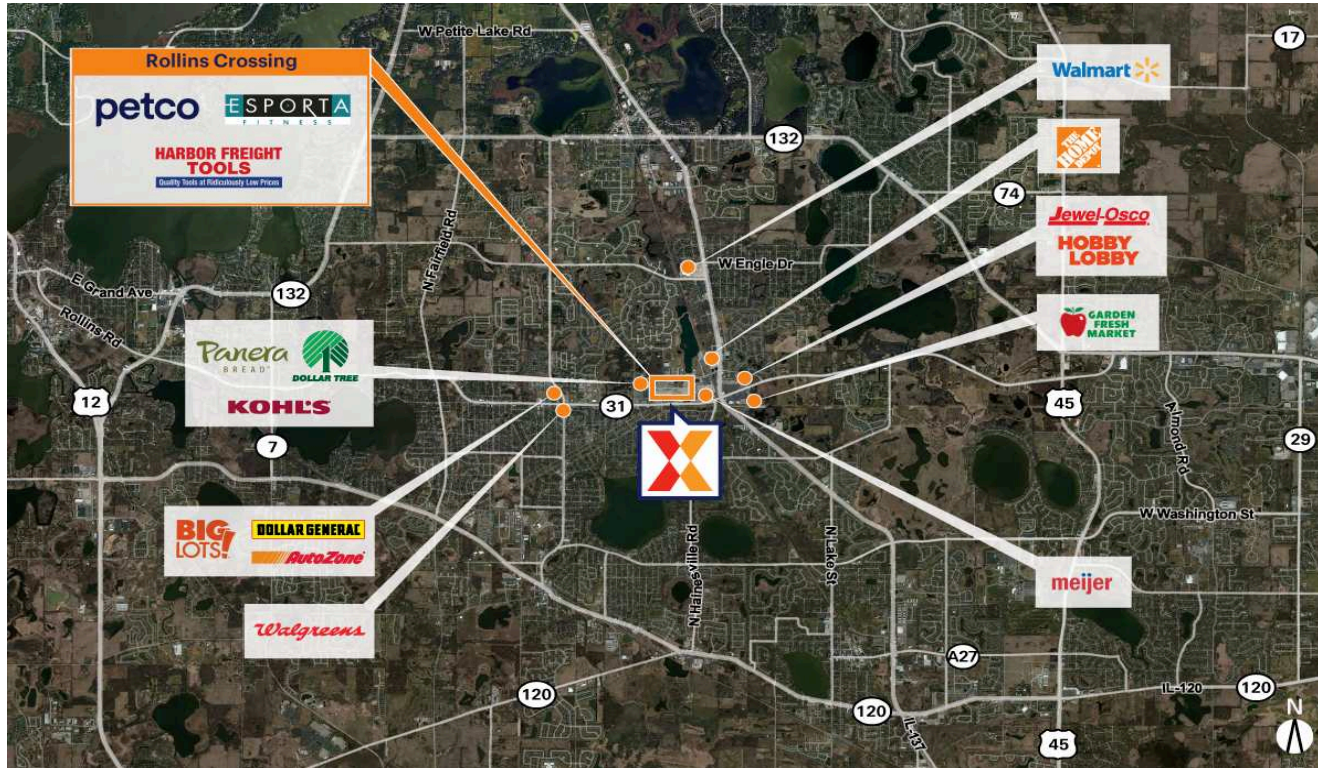


Rollins Crossing

Chicago-Naperville-Elgin, IL-IN

42.3809, -88.0711

422-550 East Rollins Road | Round Lake Beach, IL 60073-1336



Center Size: 120,292 SF



Demographics	1 Mile	3 Mile	5 Mile
	12,778	73,726	147,636
	4,035	24,820	52,173
	\$96,959	\$98,864	\$108,171

Benefit from a diverse tenant mix of national retailers such as Esporta Fitness, Harbor Freight Tools & Petco

Surrounded by an affluent trade area with an average household income of \$114K+ within a 3-mile radius

Strong daytime population of 77K+ within 3 miles

Prime location in Round Lake Beach's retail node, with high visibility from 27K+ vehicles daily on E Rollins Rd/Rte 31, the primary east/west arterial, and 21K+ on IL 83 (Kalibrate 2019,2021)

Rollins Crossing

Chicago-Naperville-Elgin, IL-IN

42.3809, -88.0711

422-550 East Rollins Road | Round Lake Beach, IL 60073-1336



Available Space

200	7,200 SF
510B	3,499 SF

Current Retailers

N.A.P.	N.A.P.	0 SF
N.A.P.1	Dental Care	0 SF
N.A.P.2	AT&T	0 SF
N.A.P.3	Fifth Third Bank	0 SF
N.A.P.4	Panda Express	0 SF
N.A.P.5	N.A.P.	0 SF
N.A.P.6	Buffalo Wild Wings	0 SF
202	Petco	11,040 SF
206	Asian Grill Sushi Buffet	13,800 SF
300	Esporta Fitness	44,794 SF
502	Armed Forces Recruiting	1,338 SF
504	Jessie Maye's Ice Cream	1,310 SF
505	Ship We Ship	1,200 SF
506	Great Clips	1,400 SF
510	GNC	1,870 SF
510A	Jersey Mike's Subs	1,758 SF
800	Harbor Freight	21,083 SF



4155