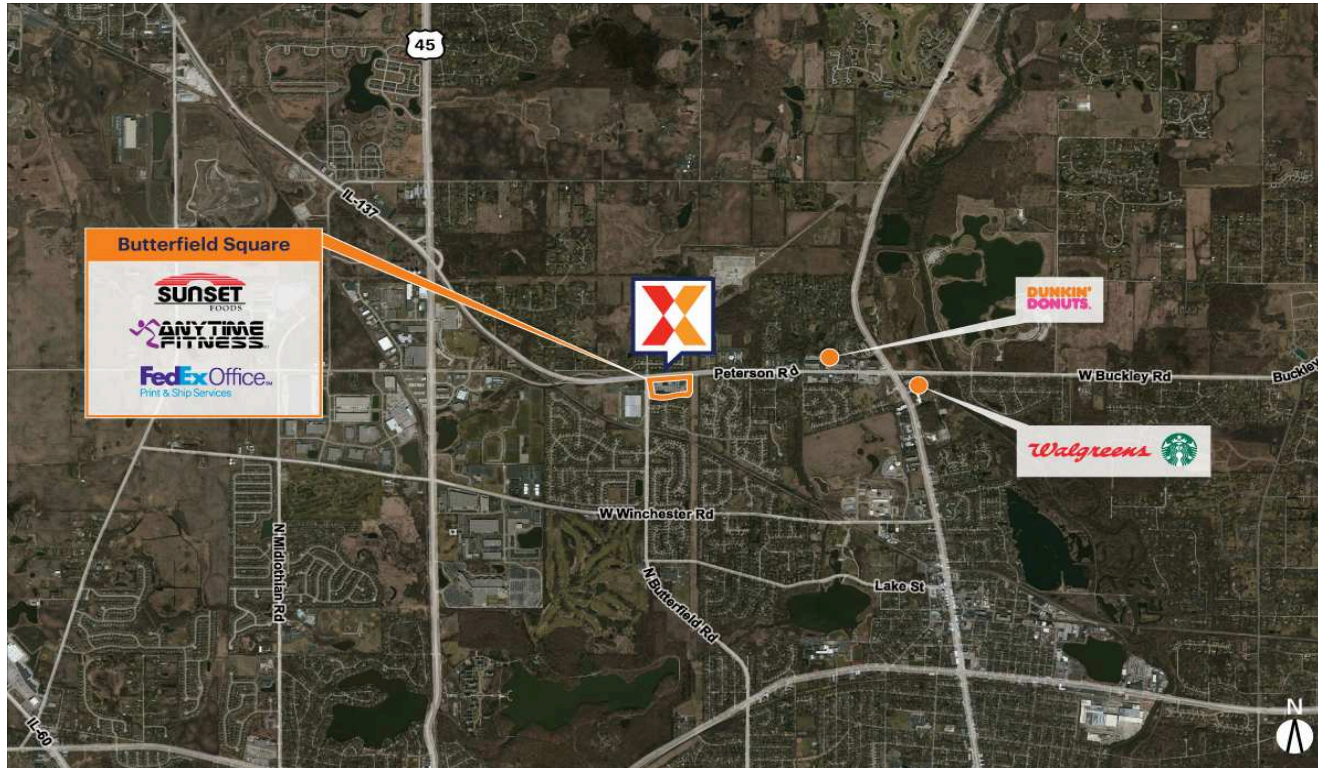


# Butterfield Square

Chicago-Naperville-Elgin, IL-IN

42.3047, -87.9812

1413-1451 Peterson Road | Libertyville, IL 60048-1001



**Center Size:** 106,683 SF



Demographics	1 Mile	3 Mile	5 Mile
	4,035	41,314	126,392
	1,366	15,100	47,852
	\$236,283	\$158,160	\$139,008

Market-dominant neighborhood center with recently upgraded facades

Retail location anchored by family-owned grocer Sunset Foods which draws a significant loyal customer base

Surrounded by an affluent population with an average household income of \$158,000+ within a 3-mile radius

Located on the major east/west arterial Rte 137 with high visibility from 23,000+ vehicles daily

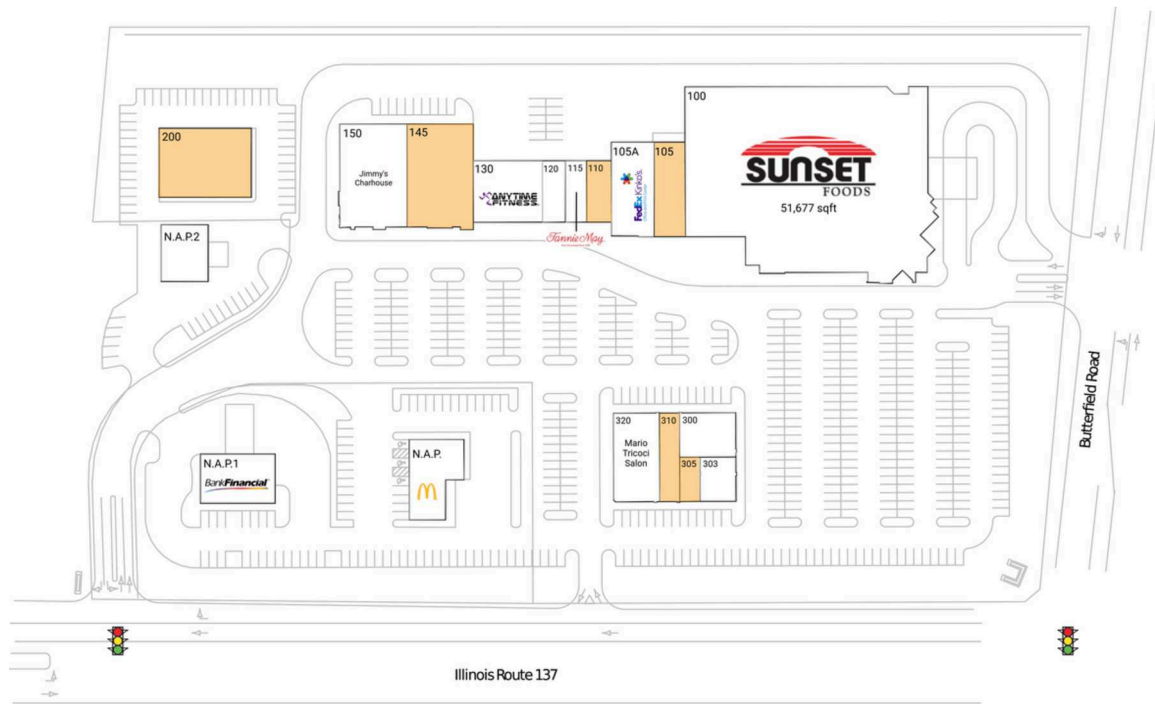
Second Generation Medical Space Available

# Butterfield Square

Chicago-Naperville-Elgin, IL-IN

42.3047, -87.9812

1413-1451 Peterson Road | Libertyville, IL 60048-1001



## Available Space

105	3,500 SF
110	1,800 SF
145	8,045 SF
200	7,500 SF
305	1,252 SF
310	2,500 SF

## Current Retailers

N.A.P.	McDonald's	0 SF
N.A.P.1	BankFinancial	0 SF
N.A.P.2	A.W. Zengeler Cleaners	0 SF
100	Sunset Foods	51,677 SF
105A	FedEx Kinko's	4,500 SF
115	Fannie May Candies	1,527 SF
120	Meat n' Melt	1,625 SF
130	Anytime Fitness	4,898 SF
150	Jimmy's Charhouse	8,240 SF
300	Ivy Rehab	3,034 SF
303	Pikus Eye Care	1,585 SF
320	Mario Tricoci Salon	5,000 SF

4148