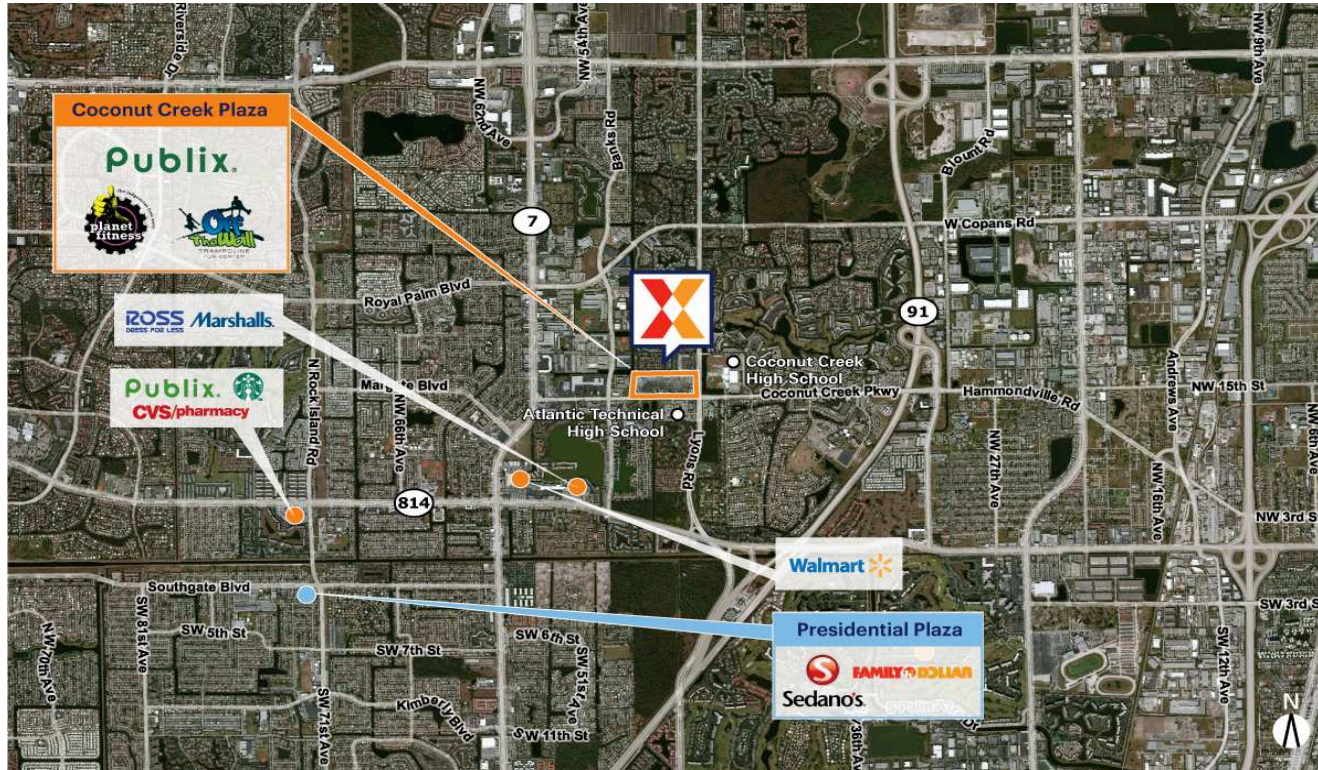


Coconut Creek Plaza

Miami-Fort Lauderdale-Pompano Beach, FL

26.2453, -80.1888

4801-4967 Coconut Creek Parkway | Coconut Creek, FL 33063



Center Size: 264,129 SF



| Demographics | 1 Mile | 3 Mile | 5 Mile |
|--------------|-----------|----------|----------|
| | 15,430 | 141,616 | 403,593 |
| | 7,284 | 56,682 | 154,183 |
| | \$100,732 | \$74,066 | \$76,813 |

Highly trafficked center with Publix, generates an estimated 7,900+ visits/day and 2.9M annual visits (based on Creditell)

Close proximity to Broward College, Atlantic Technical College and Coconut Creek High School with a total student enrollment of 75,000+

High visibility on Coconut Creek Pkwy from 26,000+ vehicles daily

Surrounded by a dense population of 141,000+ within a 3-mile radius

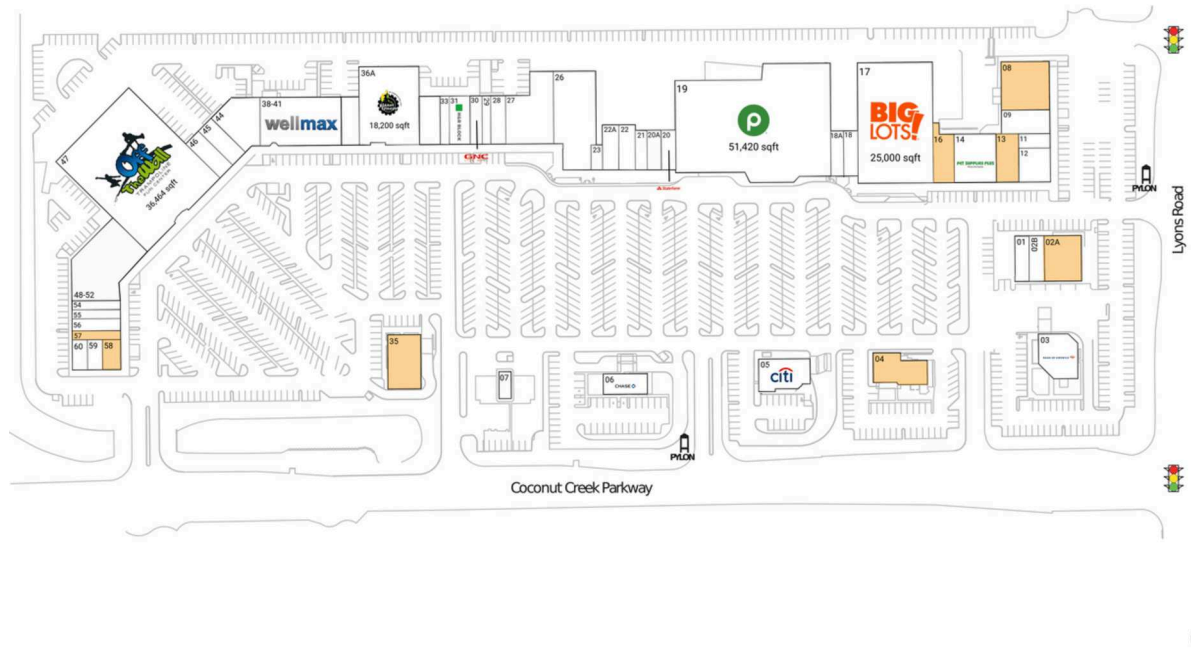
Strong lineup of national retailers including Publix, Pet Supplies Plus, Planet Fitness and GNC

Coconut Creek Plaza

Miami-Fort Lauderdale-Pompano Beach, FL

26.2453, -80.1888

4801-4967 Coconut Creek Parkway | Coconut Creek, FL 33063



Available Space

| | |
|-----|----------|
| 02A | 4,000 SF |
| 08 | 5,824 SF |
| 13 | 2,550 SF |
| 16 | 2,800 SF |
| 35 | 4,783 SF |
| 57 | 1,250 SF |
| 58 | 1,500 SF |

Pad Opportunities

| | |
|--------|--------------|
| 04 Pad | 3,275 SF/0.1 |
|--------|--------------|

Current Retailers

| | | | | | |
|-----|----------------------------------|-----------|-------|-------------------------------------|-----------|
| 01 | Edward Jones | 1,535 SF | Grill | | |
| 02B | Profile by Sanford | 2,500 SF | 29 | Coconut Creek | 1,136 SF |
| 03 | Bank of America | 3,900 SF | | Podiatry Assoc. | |
| 05 | Citi | 4,235 SF | 30 | GNC | 1,600 SF |
| 06 | Chase | 2,483 SF | 31 | H&R Block | 2,050 SF |
| 07 | BP Products North America, Inc | 3,522 SF | 33 | Lifestyle Hearing of Broward | 1,200 SF |
| 09 | Laundromart | 3,112 SF | 36A | Planet Fitness | 18,200 SF |
| 11 | Cosmetic & Implant Designs Group | 1,250 SF | 38-41 | Wellmax | 10,800 SF |
| 12 | Team Creek Martial Arts | 3,000 SF | 44 | Coconut Creek Academy | 4,892 SF |
| 14 | Pet Supplies Plus | 6,370 SF | 45 | Dental First Care | 2,400 SF |
| 17 | Big Lots | 25,000 SF | 46 | Cubo Escape | 2,400 SF |
| 18 | Divina Nail Bar | 1,740 SF | | Rooms and Games | |
| 18A | Publix Liquor | 1,973 SF | 47 | Off the Wall | 36,464 SF |
| 19 | Publix | 51,420 SF | 48-52 | Trampoline Career Source of Broward | 10,365 SF |
| 20 | State Farm | 1,412 SF | | Ronel Desrosiers | 1,200 SF |
| 20A | Johnny Pies | 1,155 SF | 54 | A-1 Master Traffic & Driving School | 1,200 SF |
| 21 | Hair Cuttery | 1,050 SF | 55 | Gina's Lux Salon | 1,600 SF |
| 22 | Chase Nails | 1,975 SF | 56 | Estrella Insurance | 1,250 SF |
| 22A | Golden Krust | 1,834 SF | 59 | Puppylicious | 1,250 SF |
| 23 | Tarrazu Coffee Co | 1,157 SF | 60 | Grooming Spa | |
| 26 | Faith World | 10,300 SF | | | |
| 27 | Harvest Church | | | | |
| 27 | Ballet Elite | 8,000 SF | | | |
| 28 | La Rural Mexican | 2,000 SF | | | |

1414