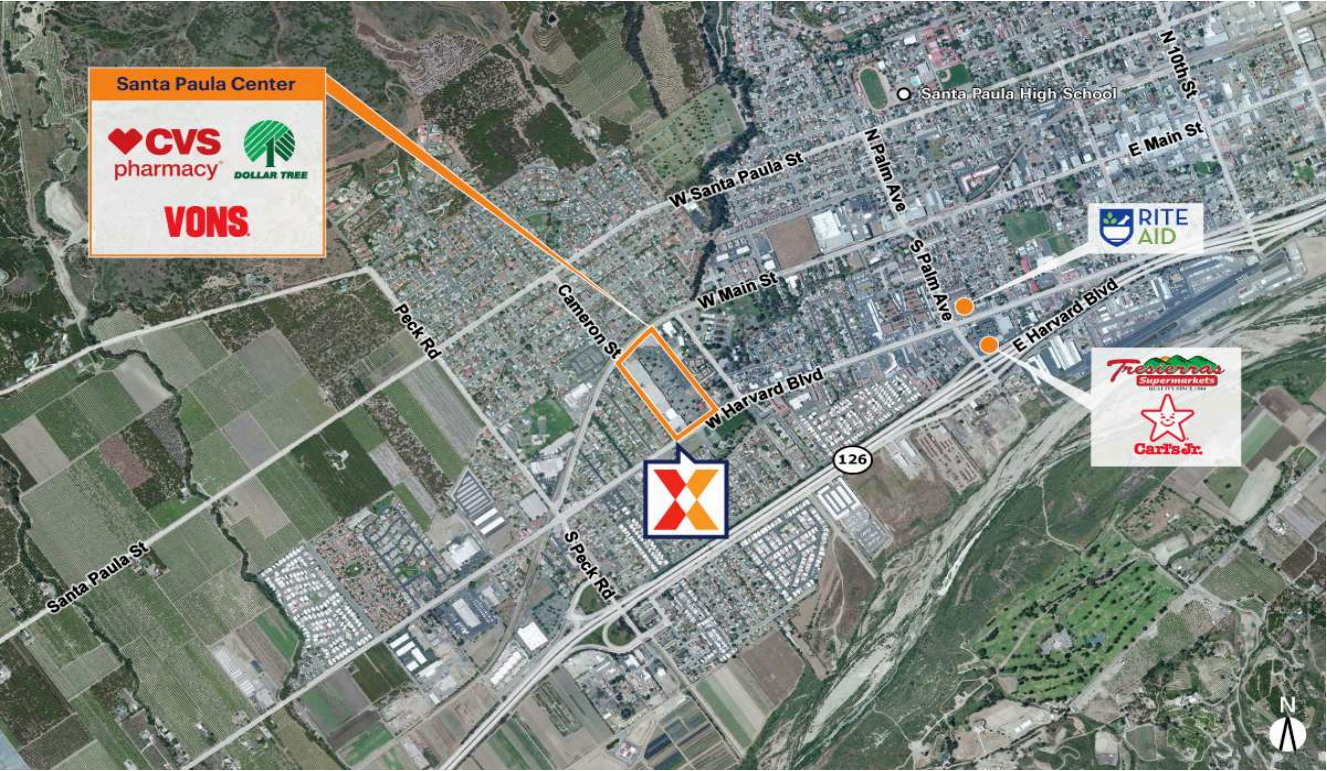


# Santa Paula Center

Oxnard-Thousand Oaks-Ventura, CA

34.3448, -119.081  
550 - 660 West Main Street | Santa Paula, CA 93060



Center Size: 191,475 SF



Demographics	1 Mile	3 Mile	5 Mile
	16,554	32,048	33,824
	4,764	9,359	9,893
	\$94,035	\$96,575	\$99,564

Anchored by 41,000 SF Vons, along with top national retailers including Planet Fitness, CVS/ pharmacy, Dollar Tree, Big 5, Subway, The UPS Store, Taco Bell, Panda Express, Spectrum, & Chase drawing an estimated 2.6M+ annual visits (Placer.ai 2024)

Close proximity to several local public schools including the adjacent Blanchard Elementary School and Glen City Elementary School as well as the nearby Isbell Middle School with a combined enrollment of 1,800+ students (NCES, 2023)

Located on Harvard St, the main thoroughfare in Santa Paula with nearby access to CA-126

# Santa Paula Center

Oxnard-Thousand Oaks-Ventura, CA

34.3448, -119.081

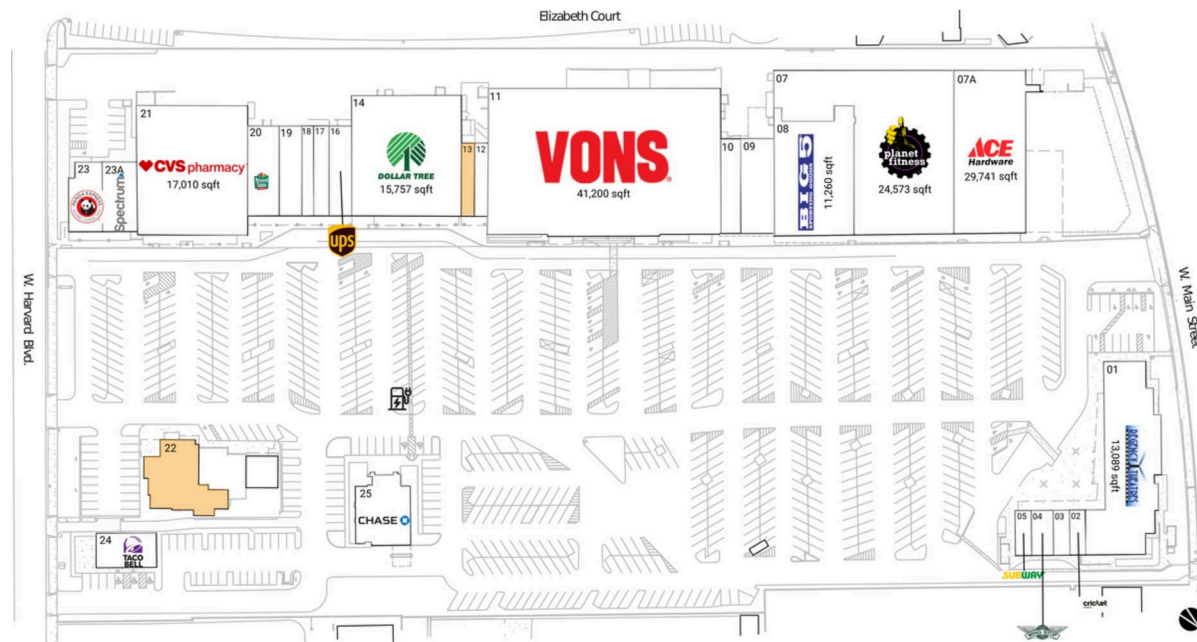
550 - 660 West Main Street | Santa Paula, CA 93060

## Available Space

13	1,120 SF
22	4,595 SF

## Current Retailers

01	Regency Theaters	13,089 SF
02	Cricket	865 SF
03	Professional	900 SF
04	Wingstop	1,200 SF
05	Subway	900 SF
07	Planet Fitness	24,573 SF
07A	Heritage Hardware	29,741 SF
08	Big 5 Sporting Goods	11,260 SF
09	Primary Medical	3,315 SF
10	Laird's Butcher Shop	1,700 SF
11	Vons	41,200 sqft
12	Santa Paula Cleaners	1,200 SF
14	Dollar Tree	15,757 SF
16	The UPS Store	2,500 SF
17	Dee Thai Cuisine	1,700 SF
18	Amazing Cuts	1,300 SF
19	Sally Beauty	2,500 SF
20	Round Table Pizza	3,500 SF
21	CVS/pharmacy	17,010 SF
23	Panda Express	2,000 SF
23A	Spectrum	2,950 SF
24	Taco Bell	2,400 SF
25	Chase	4,200 SF



4075