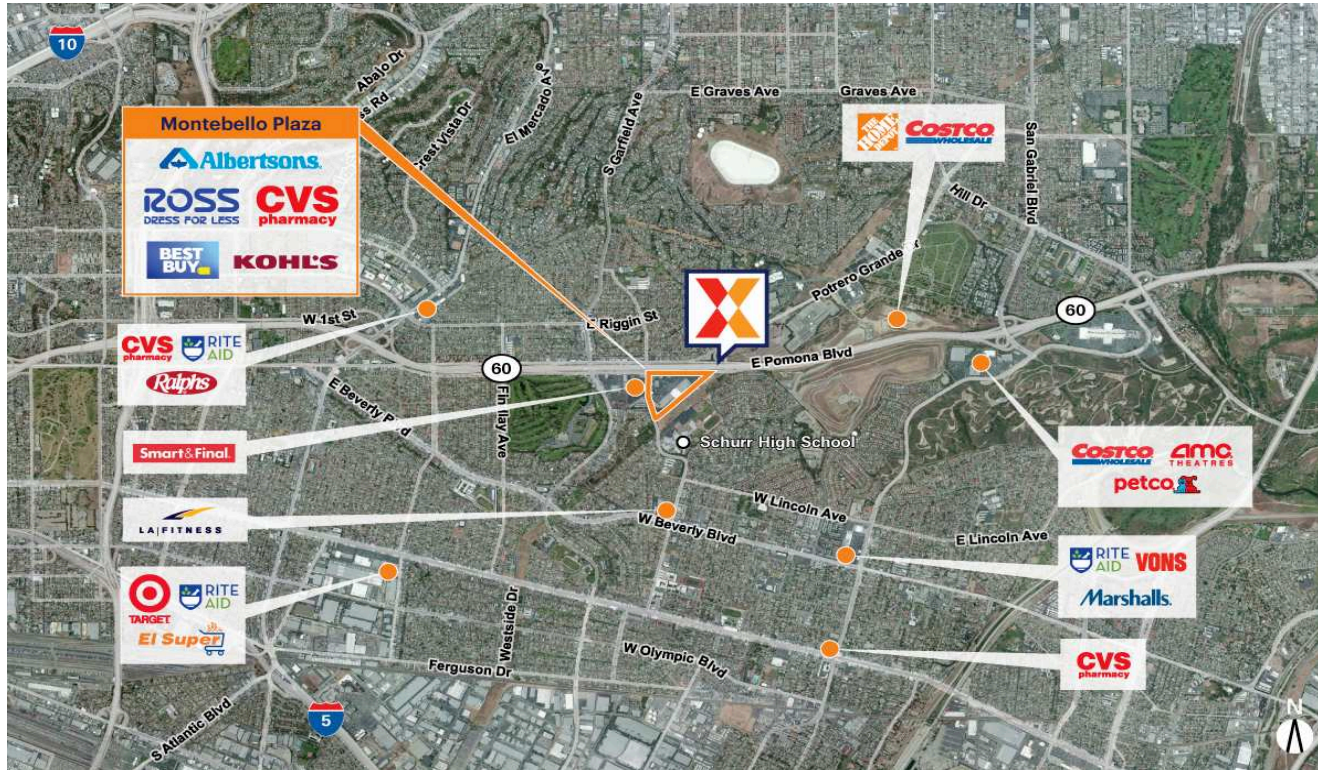


Montebello Plaza

Los Angeles-Long Beach-Anaheim, CA

34.0314, -118.1227

2401-2633 West Via Campo | Montebello, CA 90640



Center Size: 284,331 SF



Demographics	1 Mile	3 Mile	5 Mile
	20,305	238,268	684,151
	6,671	69,395	190,813
	\$99,163	\$81,613	\$80,586

High visibility from SR 60/Pomona Fwy with 237,000+ VPD

Surrounded by a strong daytime population of 271,000+ as well as a population of 238,000+ residents within 3 miles

Albertsons-anchored center along with top national tenants including CVS/pharmacy, Ross Dress for Less & Best Buy, drawing an estimated 11,000+ visits/day and 4.0M+ visits/year (based on Placer.ai)

Montebello Plaza

Los Angeles-Long Beach-Anaheim, CA

34.0314, -118.1227
2401-2633 West Via Campo | Montebello, CA 90640



Available Space

FS8 5,000 SF

Current Retailers

FS1	Union Bank	6,750 SF
FS2	Bank Of America	4,090 SF
FS3	Del Taco	1,500 SF
FS4	Chevron	1 SF
FS6	Bag O' Crab	5,300 SF
FS7	Super Buffet	5,000 SF
01	Five Below	8,073 SF
02	Best Buy	45,041 SF
03	Albertsons	52,604 SF
04	Kohl's	30,360 SF
05	Ross Dress For Less	26,700 SF
06	CVS/Pharmacy	32,584 SF
07	Quest Diagnostics	2,936 SF
08	Miki-Chan's Okazu-Ya	1,200 SF
09	The Tutoring Center	1,200 SF
10	Dr. Dennis Kuwaye	1,200 SF
11/12	Royal Academy Of Music	3,240 SF
13	Classy Nails	800 SF
14	Queen's Beauty	2,640 SF
15	Elite Foot Spa	1,600 SF
16	Elite Foot Spa	1,600 SF
17	United States Post Office	3,200 SF
18	La Michoacana	2,000 SF
19	Leslie's Swimming Pool Supplies	2,800 SF
20	Modern Thai Restaurant	2,400 SF
23/21	Office Depot	5,600 SF
24	Jamba Juice	1,200 SF
25	The Flame Broiler	1,500 SF
26	Nayan Threading	900 SF
27	La Enchilada Mexcian Food	2,400 SF
29/34/35	Healthcare Partners Medical Group	20,713 SF
29A	Healthcare Partners Medical Group	0 SF
33	Subway	1,500 SF

1321