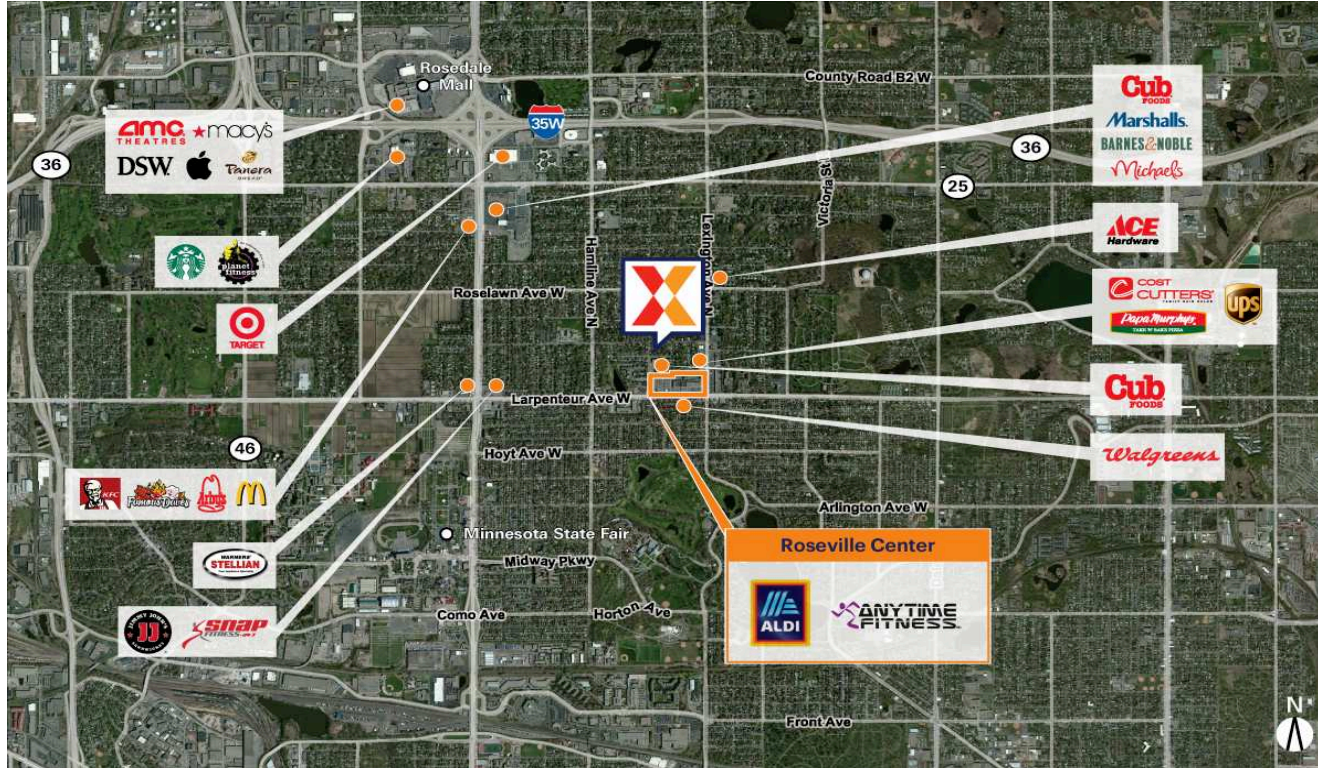


Roseville Center

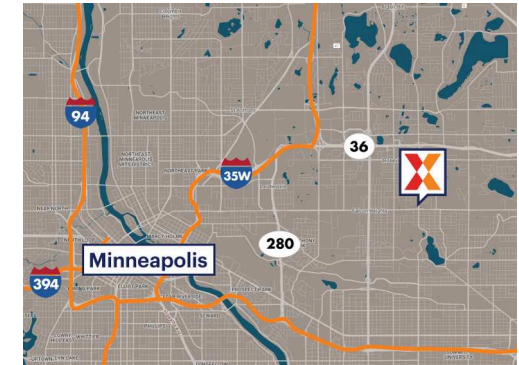
Minneapolis-St. Paul-Bloomington, MN-WI

44.9926, -93.1495

1135 Larpenteur Avenue W | Roseville, MN 55113-6335



Center Size: 82,576 SF



Demographics	1 Mile	3 Mile	5 Mile
	13,082	119,935	376,576
	5,568	48,043	152,686
	\$100,513	\$84,402	\$90,428

Newly renovated Aldi-anchored center with top national retailers including Dollar Tree, Sherwin-Williams, Papa John's

Located less than 2 miles from Minnesota State Fairgrounds with 1.7 MM+ visitors per year and Rosedale Center, the premier shopping destination in Roseville

Surrounded by a dense population of 119,000+ within 3 miles

Roseville Center

Minneapolis-St. Paul-Bloomington, MN-WI

44.9926, -93.1495

1135 Larpenteur Avenue W | Roseville, MN 55113-6335



Available Space

2 1,000 SF

Current Retailers

A	US Bank	400 SF
B	US Bank	2,200 SF
N.A.P.	Cub Foods	0 SF
1	Dollar Tree	10,145 SF
4	The Original Malt Shop	2,750 SF
5	Caribou Coffee Company	3,313 SF
6	Moore Hair to Love	1,070 SF
7	Art's Barber Shop	860 SF
8	Expert Nails	1,013 SF
9	Papa John's	2,200 SF
10A	House of Wong	7,000 SF
10B	Anytime Fitness	5,000 SF
14	Dreamers Vault Games	4,800 SF
16	MGM Wine & Spirits	4,800 SF
17	Sherwin-Williams	4,722 SF
18	Pet Supplies Plus	7,147 SF
19	ALDI	22,418 SF