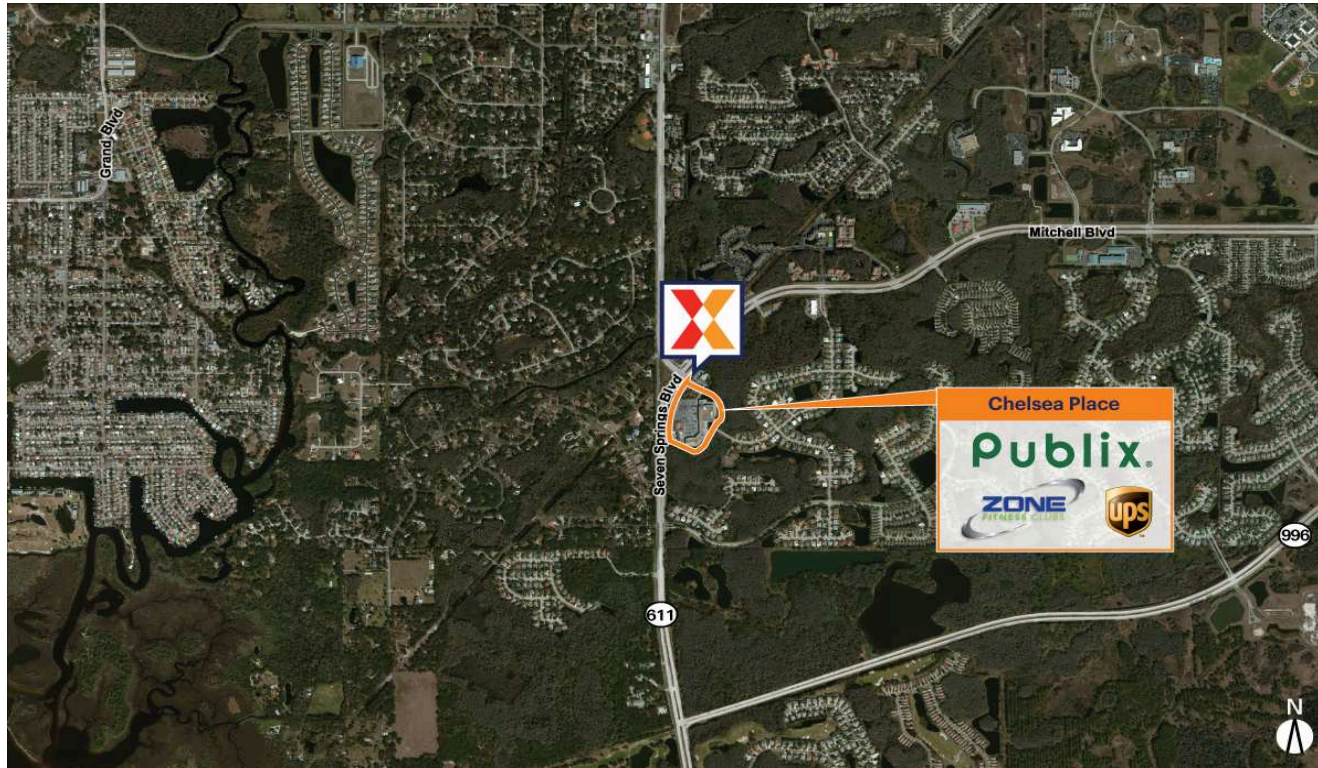


Chelsea Place

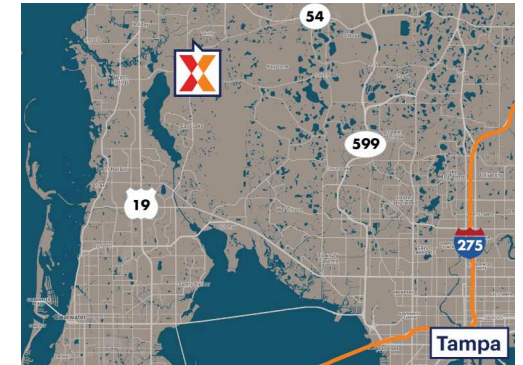
Tampa-St. Petersburg-Clearwater, FL

28.1801, -82.6985

1302-1420 Seven Springs Boulevard | New Port Richey, FL 34655



Center Size: 81,144 SF



Demographics	1 Mile	3 Mile	5 Mile
👤	4,955	54,698	159,608
🏠	1,815	21,997	67,791
💰	\$107,031	\$76,014	\$78,132

Publix-anchored community center

Benefits from an expansive trade area with strong demographics

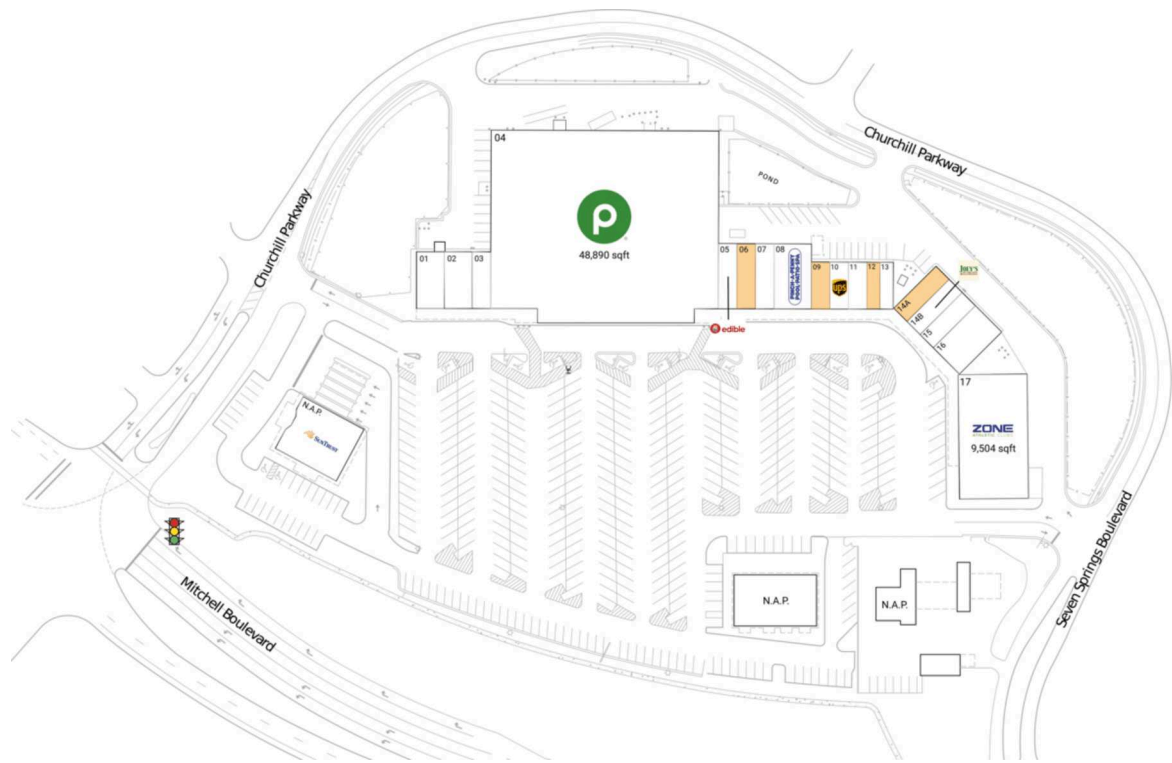
High visibility on Seven Springs Blvd from 25,000+ vehicles daily

Chelsea Place

Tampa-St. Petersburg-Clearwater, FL

28.1801, -82.6985

1302-1420 Seven Springs Boulevard | New Port Richey, FL 34655



Available Space

06	1,400 SF
09	1,000 SF
12	725 SF
14A	1,300 SF

Current Retailers

N.A.P.	SunTrust Bank	0 SF
01	Wraps and Kabobs	1,800 SF
02	Chelsea Place Liquors	1,800 SF
03	Hot Wok	1,200 SF
04	Publix	48,890 SF
05	Edible Arrangements	1,400 SF
07	Turbo Nails	1,400 SF
08	Pinch-A-Penny	2,800 SF
10	The UPS Store	1,000 SF
11	The Platinum House Salon	1,000 SF
13	Scissors Edge Barber Shop	725 SF
14B	Joey's New York Pizza & Italian Restaurant	1,300 SF
15	Any Lab Test Now	1,300 SF
16	Liquid Garage	2,600 SF
17	Zone Fitness Club	9,504 SF

1814