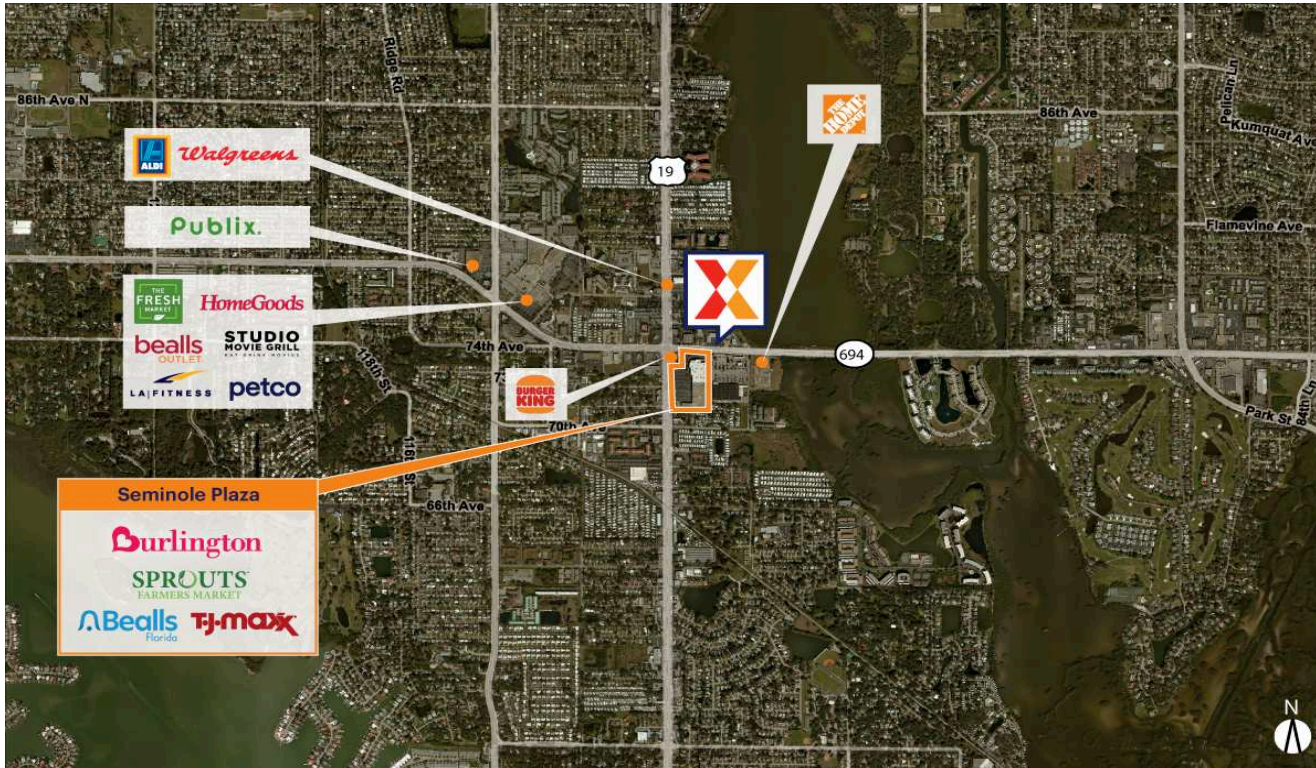


Seminole Plaza

Tampa-St. Petersburg-Clearwater, FL

27.8377, -82.7869

7191 Seminole Boulevard | Seminole, FL 32772



Center Size: 156,718 SF



Demographics	1 Mile	3 Mile	5 Mile
	12,683	82,277	208,695
	6,619	38,180	95,195
	\$71,895	\$87,745	\$81,121

[Click here to see CEO Jim Taylor discuss the redevelopment at Seminole Plaza](#)

Dual-Anchored by Sprouts Farmers Market and T.J. Maxx

Surrounded by a dense population of 82,000+ within a 3-mile radius

High visibility from 32,000+ vehicles daily on Seminole Blvd and 37,000+ on Park Blvd

Seminole Plaza

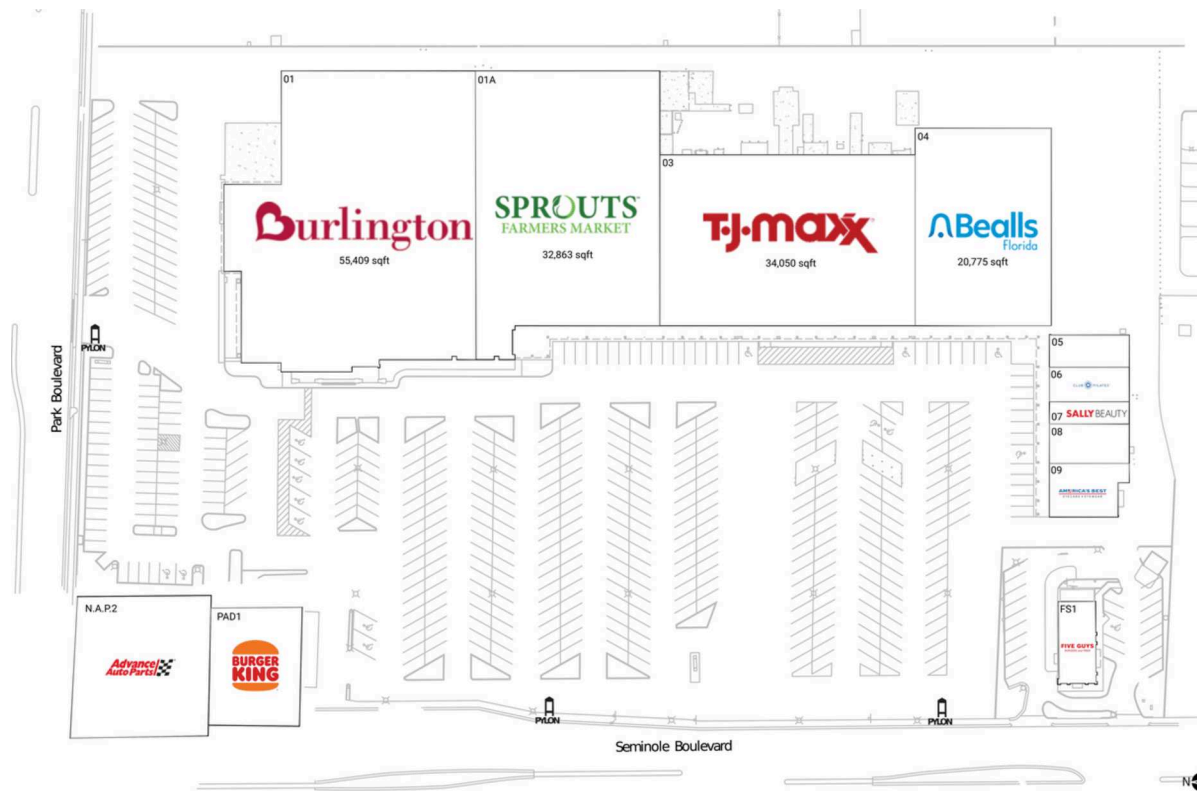
Tampa-St. Petersburg-Clearwater, FL

27.8377, -82.7869

7191 Seminole Boulevard | Seminole, FL 32772

Current Retailers

FS1	Five Guys	2,709 SF
N.A.P.2	Advance Auto Parts	0 SF
PAD1	Burger King	1,701 SF
01	Burlington	55,409 SF
01A	Sprouts Farmers Market	32,863 SF
03	T.J. Maxx	34,050 SF
04	Bealls Florida	20,775 SF
05	Kaizen Nail & Spa	1,990 SF
06	Club Pilates	2,140 SF
07	Sally Beauty Supply	1,380 SF
08	CosmoProf	2,450 SF
09	America's Best Contacts & Eyeglasses	2,800 SF



1155