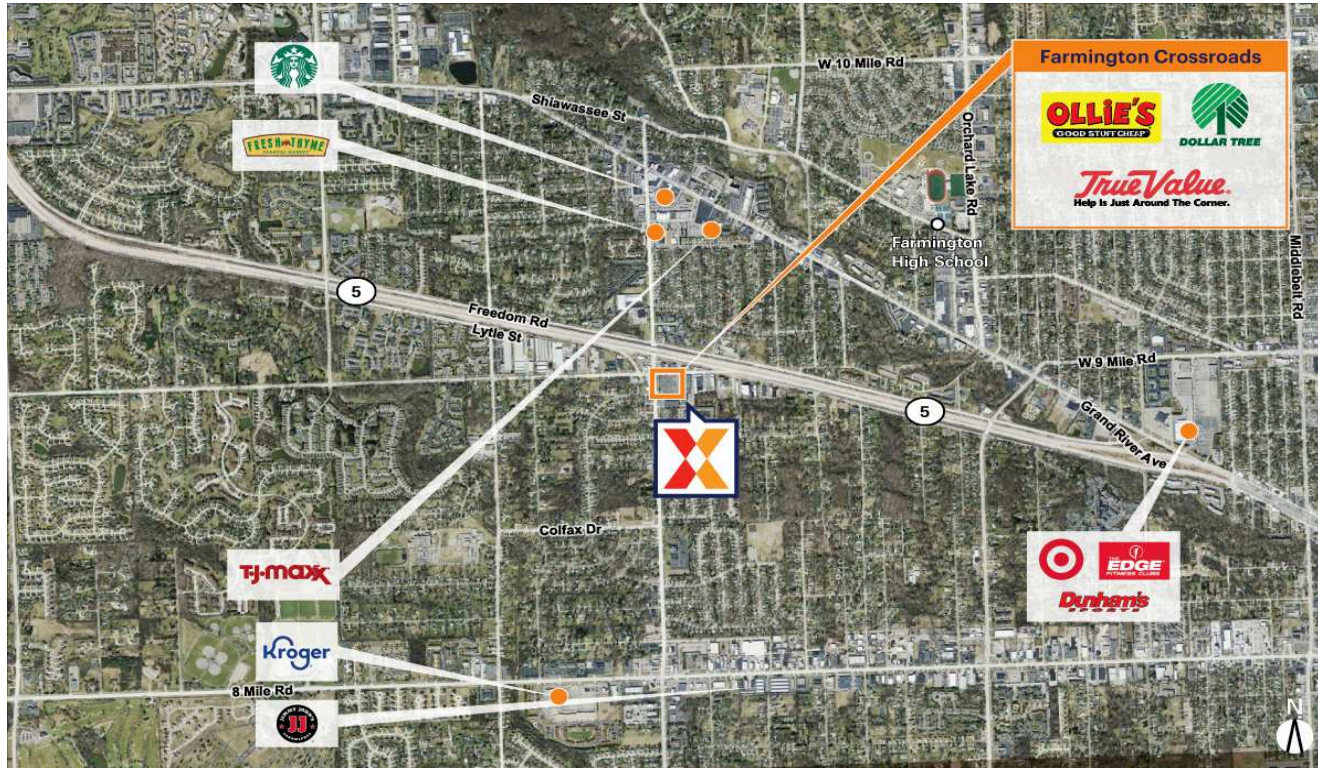


Farmington Crossroads

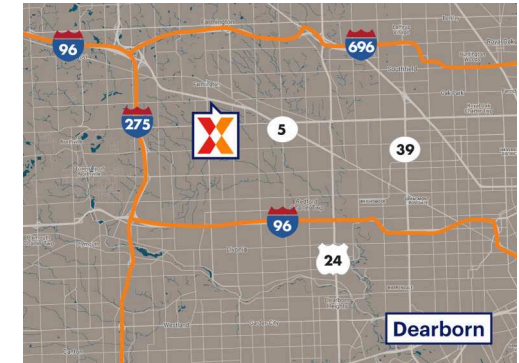
Detroit-Warren-Dearborn, MI

42.4543, -83.3749

22004-22128 Farmington Road | Farmington, MI 48336



Center Size: 85,168 SF



Demographics	1 Mile	3 Mile	5 Mile
	9,926	80,076	215,039
	4,932	34,736	91,434
	\$88,622	\$105,000	\$100,393

Center with strong anchor retailers including Ollie's Bargain Outlet, True Value Hardware & Dollar Tree

Surrounded by a dense population of 80,000+ residents with an average household income of \$105,000+ within 3 miles

Easily accessible center with three points of ingress/egress with close proximity to M-5

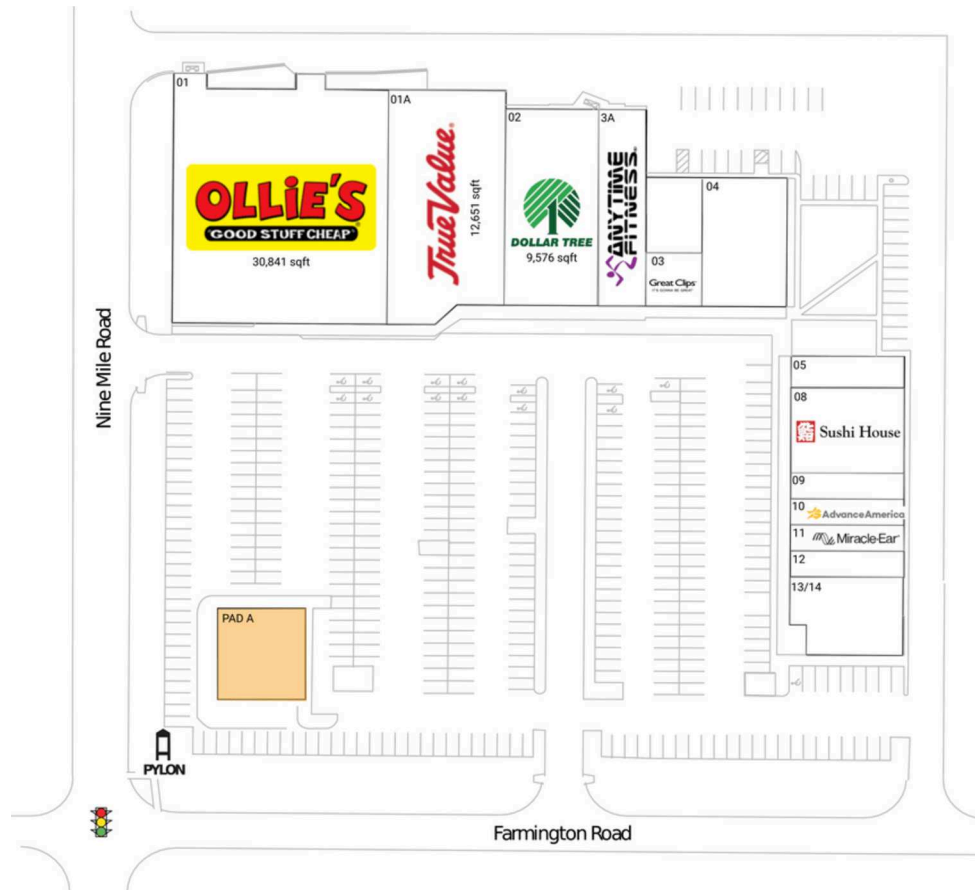
Benefits from strong lunch and dinner traffic for diverse restaurant selection

Farmington Crossroads

Detroit-Warren-Dearborn, MI

42.4543, -83.3749

22004-22128 Farmington Road | Farmington, MI 48336



Pad Opportunities

PAD A Drive-thru 43,560 SF/1

Current Retailers

01	Ollie's	30,841 SF
01A	True Value	12,651 SF
02	Dollar Tree	9,576 SF
03	Great Clips	1,770 SF
3A	Anytime Fitness	5,470 SF
04	Opulent Oasis Beauty Studios	6,100 SF
05	Rainbow Restaurant	2,000 SF
08	Sushi House	5,200 SF
09	Andhra Café	1,600 SF
10	Advance America	1,600 SF
11	Miracle-Ear	1,600 SF
12	Wu Xing Acupressure	1,600 SF
13/14	Peterlin's	5,160 SF

N ●

1126