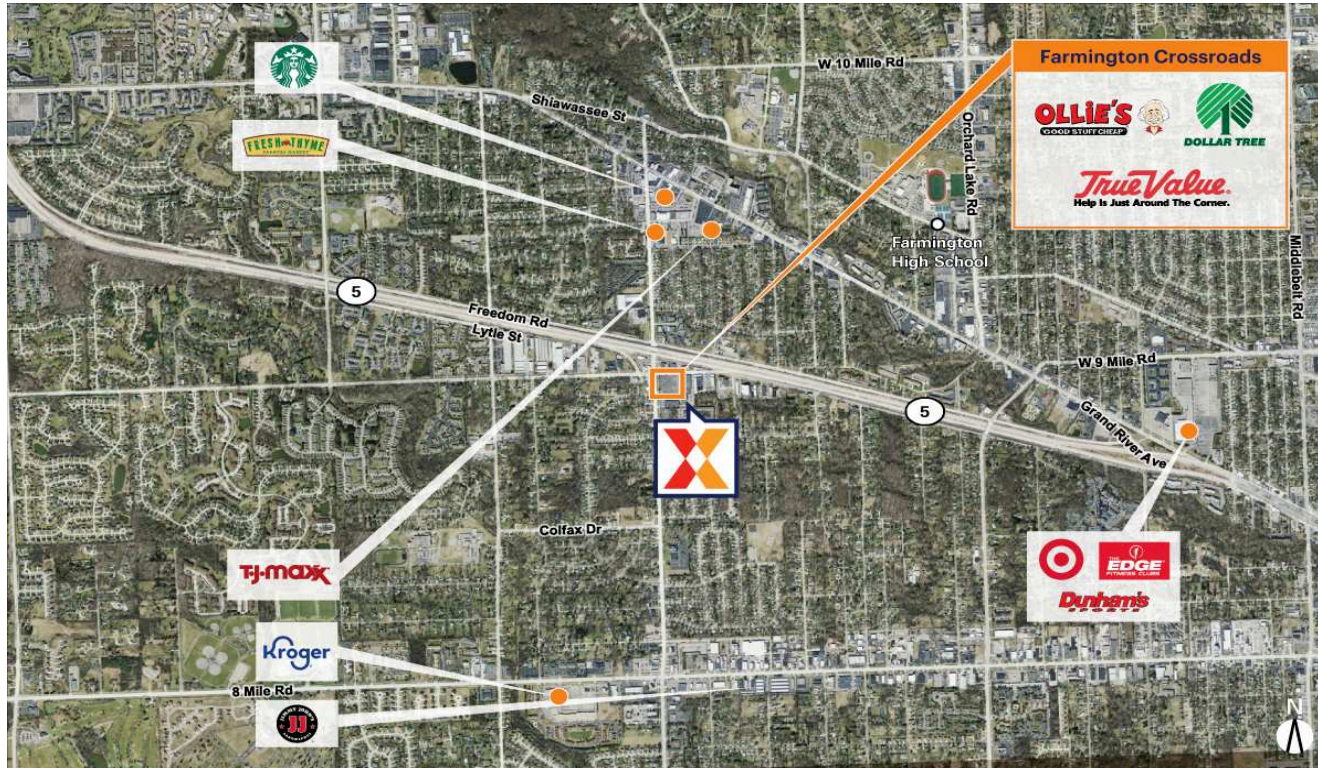


Farmington Crossroads

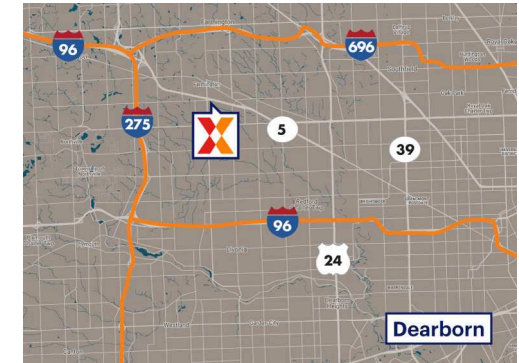
Detroit-Warren-Dearborn, MI

42.4543, -83.3749

22004-22128 Farmington Road | Farmington, MI 48336



Center Size: 85,168 SF



Demographics	1 Mile	3 Mile	5 Mile
	9,928	80,043	215,150
	4,933	34,716	91,481
	\$109,878	\$119,534	\$114,005

Benefit from a strong national retailer lineup with Ollie's Bargain Outlet, True Value Hardware, Dollar Tree & Anytime Fitness

Surrounded by a highly affluent, educated, dense population of 80K+ residents, with an average household income of \$105K+, and 51% holding a college degree within 3 miles

High daytime population of 82K+ within 3 miles, providing lunch and dinner traffic for the center's diverse restaurant selection

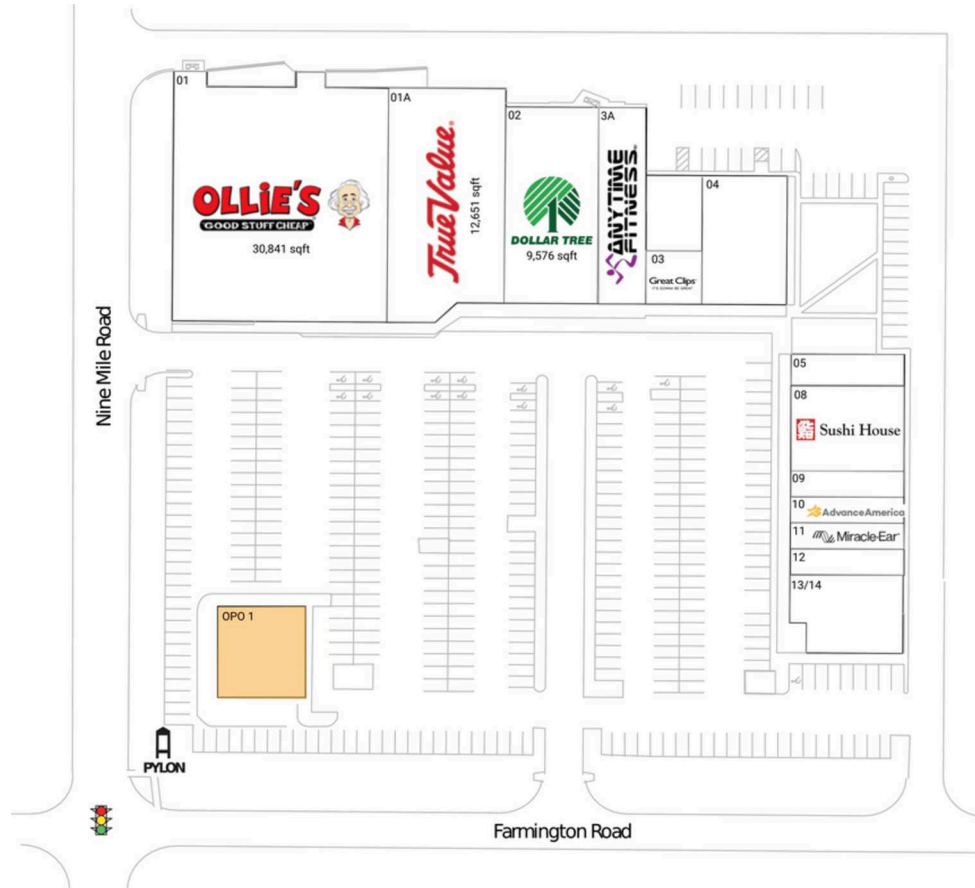
Excellent accessibility with three points of ingress/ egress, proximity to M-5, and high visibility from 22K+ vehicles daily on Farmington Rd and 14K+ on 9 Mile Rd (Kalibrate 2022)

Farmington Crossroads

Detroit-Warren-Dearborn, MI

42.4543, -83.3749

22004-22128 Farmington Road | Farmington, MI 48336



Pad Opportunities

OPO 1 Drive-thru 0 SF/0

Current Retailers

01	Ollie's	30,841 SF
01A	True Value	12,651 SF
02	Dollar Tree	9,576 SF
03	Great Clips	1,770 SF
3A	Anytime Fitness	5,470 SF
04	Opulent Oasis Beauty Studios	6,100 SF
05	Rainbow Restaurant	2,000 SF
08	Sushi House	5,200 SF
09	Andhra Café	1,600 SF
10	Advance America	1,600 SF
11	Miracle-Ear	1,600 SF
12	Wu Xing Acupressure	1,600 SF
13/14	Peterlin's	5,160 SF

N ●

1126