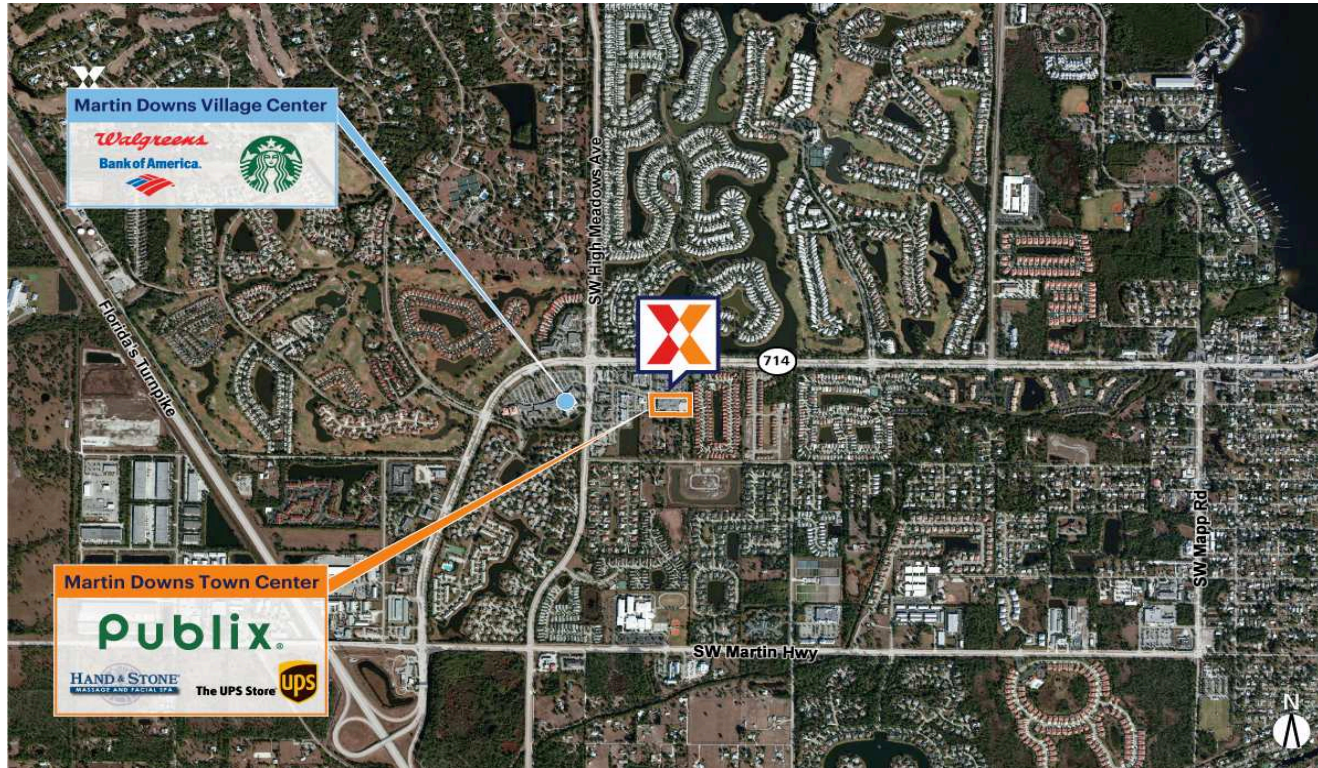


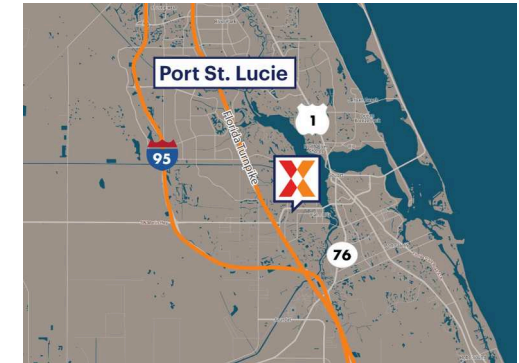
Martin Downs Town Center

Port St. Lucie, FL

27.1714, -80.2906
2750 SW Martin Downs Blvd | Palm City, FL 34990



Center Size: 64,546 SF



Demographics	1 Mile	3 Mile	5 Mile
	7,994	34,724	83,777
	3,619	14,979	35,413
	\$91,920	\$115,536	\$104,808

Highly trafficked center located in the heart of Palm City anchored by a market-dominant Publix grocery store

Surrounded by more than 20 residential communities with 83,000+ people within 5 miles

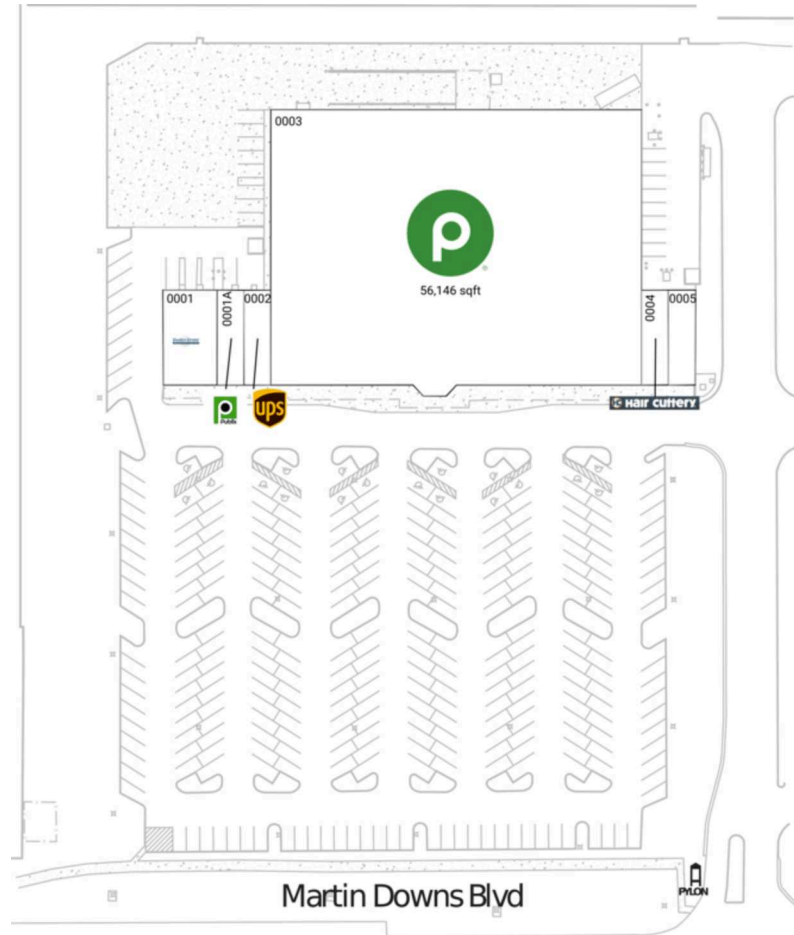
Direct access to Florida Turnpike and I-95

Affluent market with an average household income of \$115,000+ within 3 miles

Martin Downs Town Center

Port St. Lucie, FL

27.1714, -80.2906
2750 SW Martin Downs Blvd | Palm City, FL 34990



Current Retailers

0001	Hand & Stone Massage & Facial Spa	2,800 SF
0001A	Publix Liquor	1,400 SF
0002	The UPS Store	1,400 SF
0003	Publix	56,146 SF
0004	Hair Cuttery	1,400 SF
0005	Noire the Nails Bar USA	1,400 SF



1834