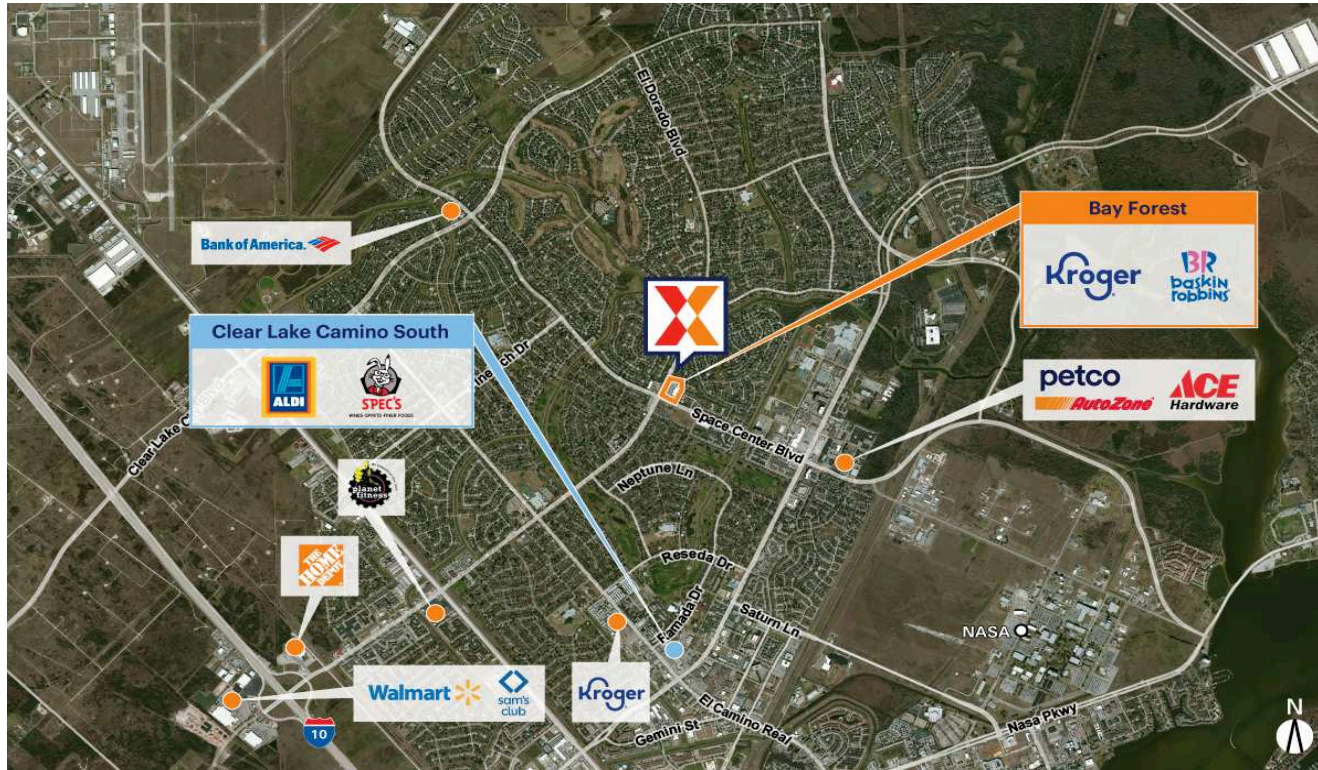


Bay Forest

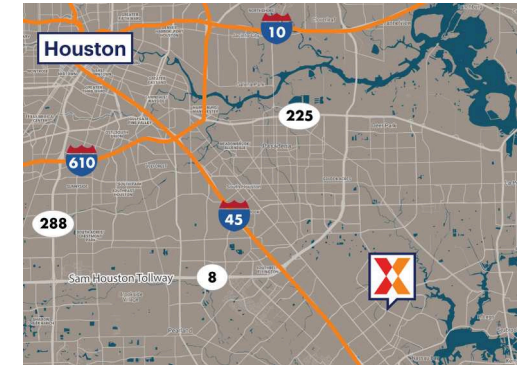
Houston-Pasadena-The Woodlands, TX

29.578, -95.1208

1904-1962 El Dorado Boulevard | Houston, TX 77062



Center Size: 71,667 SF



Demographics	1 Mile	3 Mile	5 Mile
	12,047	77,044	155,498
	4,985	32,302	63,368
	\$122,155	\$108,328	\$108,322

Affluent customer base with \$108,000+ average household income within a 3-mile radius

Retail space for lease in Houston's densely populated area with 77,000+ residents within 3-miles

Daytime population of 90,000+ within 3 miles, driven primarily by NASA which is 1 mile east of the center

Located at the heavily trafficked intersection of El Dorado Blvd (13,000+ VPD) and Space Center (23,000+ VPD).

Kroger-anchored shopping center with top national retailers including Baskin-Robbins

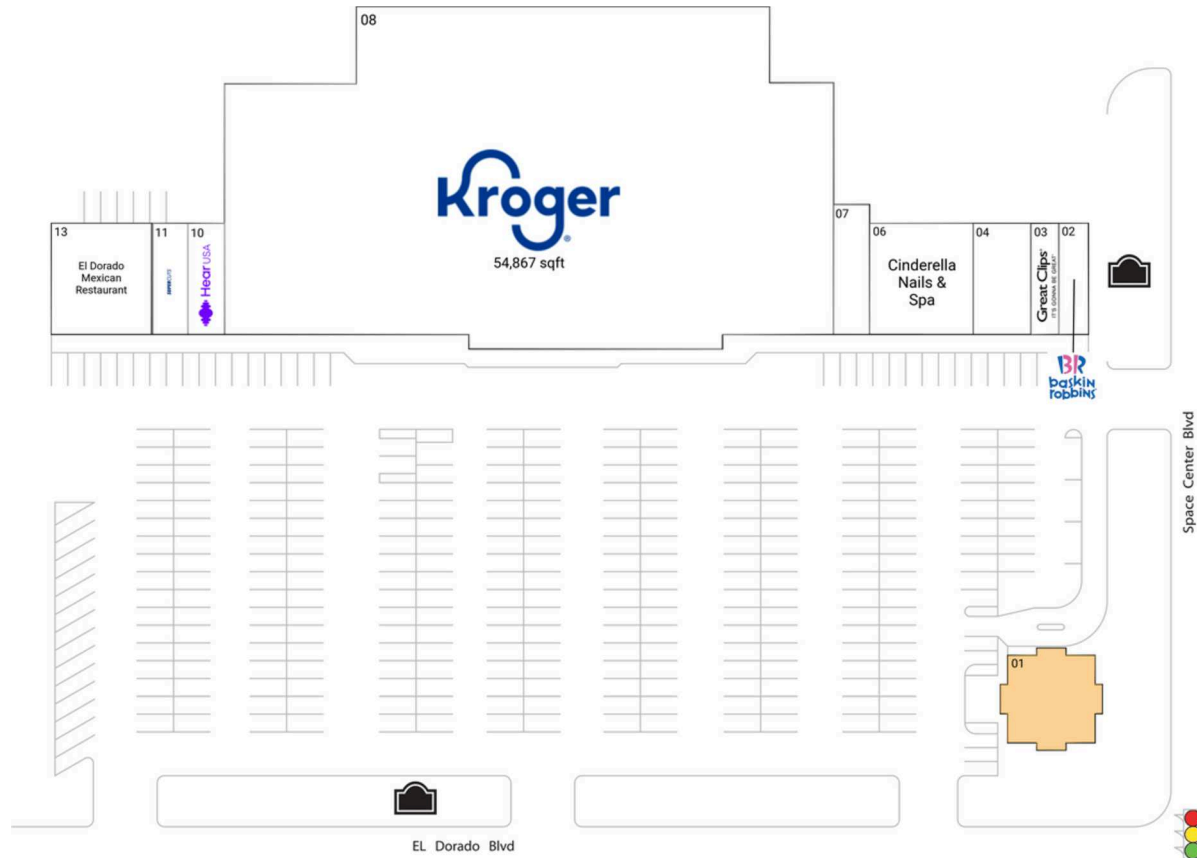
Specialty retail space and pop-up shop locations available

Bay Forest

Houston-Pasadena-The Woodlands, TX

29.578, -95.1208

1904-1962 El Dorado Boulevard | Houston, TX 77062



Available Space

01 2,500 SF

Current Retailers

02	Baskin-Robbins	900 SF
03	Great Clips	900 SF
04	Flaks Liquor	1,920 SF
06	Cinderella Nails & Spa	3,480 SF
07	Moxie District 31	1,400 SF
08	Kroger	54,867 SF
10	HearUSA	1,200 SF
11	Supercuts	1,200 SF
13	El Dorado Mexican Restaurant	3,300 SF

1401