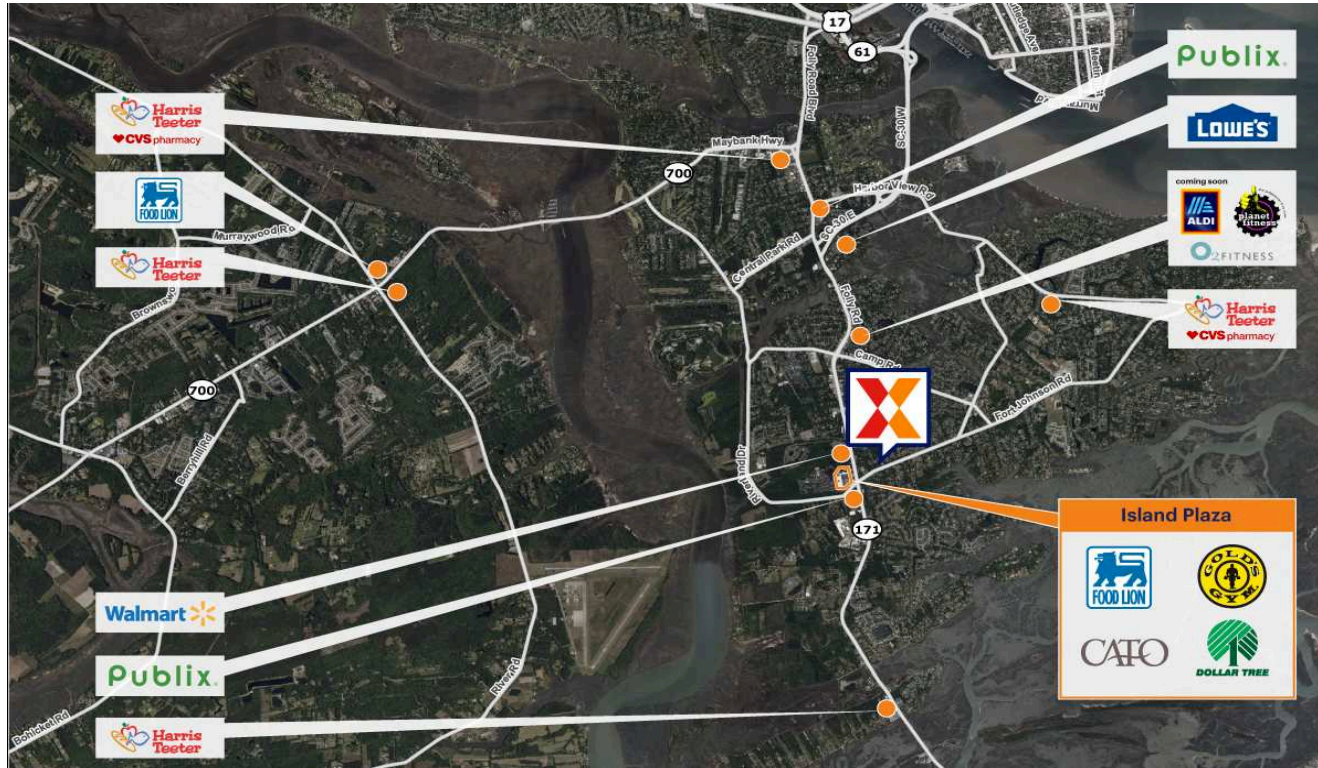


Island Plaza

Charleston-North Charleston, SC

32.7172, -79.9658

1291 Folly Road | James Island, SC 29412



Center Size: 173,524 SF



Demographics	1 Mile	3 Mile	5 Mile
👤	7,179	32,225	65,493
🏠	3,231	14,395	29,619
💰	\$101,615	\$104,506	\$122,064

Food Lion-anchored center with a strong lineup of national retailers including Dollar Tree, Cato & GNC

Easily accessible center with multiple points of ingress/egress and close proximity to James Island Expressway

Surrounded by an affluent population with an average household income of \$104,000+ within 3 miles

Island Plaza

Charleston-North Charleston, SC

32.7172, -79.9658

1291 Folly Road | James Island, SC 29412



Available Space

1C	26,680 SF
03A	6,400 SF
06	8,450 SF
08	4,800 SF

Current Retailers

N.A.P.	Fifth Third Bank	0 SF
N.A.P.1	Florence's Low Country Kitchen	0 SF
N.A.P.2	Walmart	0 SF
N.A.P.3	Publix	0 SF
01	Famulari's Pizzeria Brewpub	5,656 SF
01A	Gold's Gym	44,344 SF
1B	Dollar Tree	17,720 SF
3B	Batteries Plus	1,800 SF
05	Food Lion	37,854 SF
07	Scramblers Golf	1,600 SF
09	Nails So Dep!	3,000 SF
10	Forsberg Package Store	6,200 SF
12	Heart Beatz Dance Academy	1,200 SF
13	Great Wall	1,200 SF
14	Alvin Ord's Sandwich Shop	1,200 SF
15	Rype Juice Bar	1,200 SF
16	GNC	1,200 SF
17	Pick Thai Restaurant	1,220 SF
18	Autobell Car Wash	2,300 SF

Walmart

N.A.P.2



5179