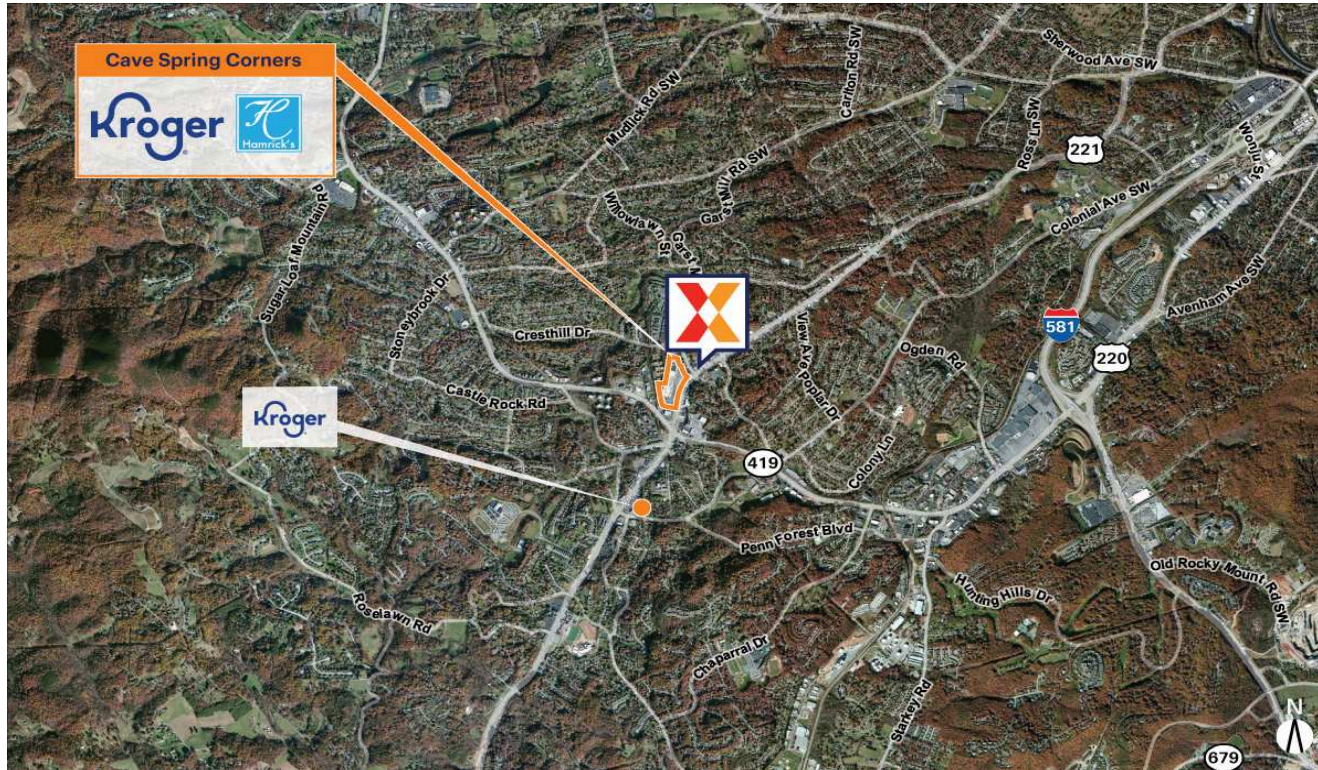


Cave Spring Corners

Roanoke, VA

37.2332, -80.0086

3971 Brambleton Avenue, Southwest | Roanoke, VA 24018



Center Size: 147,133 SF



Demographics	1 Mile	3 Mile	5 Mile
	8,305	52,482	112,675
	3,656	23,490	49,606
	\$78,222	\$93,655	\$83,598

Surrounded by the affluent community of Southwest County with an average household income of \$93,000+ within 3 miles

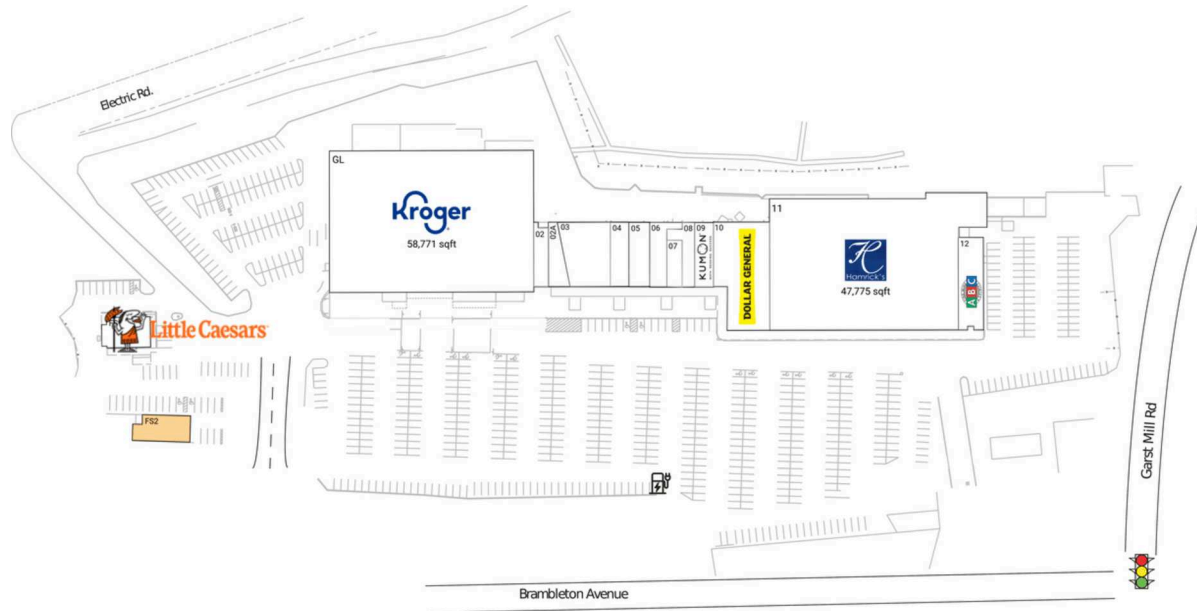
Highly trafficked center with the newly expanded Kroger

Visibility from the heavily trafficked Electric Rd

Cave Spring Corners

Roanoke, VA

37.2332, -80.0086
3971 Brambleton Avenue, Southwest | Roanoke, VA 24018



Available Space

FS2 4,321 SF

Current Retailers

FS1	Little Caesars Pizza	2,500 SF
GL	Kroger	58,771 SF
02	Nails & Spa Center	1,600 SF
02A	Teppan Express	1,786 SF
03	Banner's Hallmark	5,909 SF
04	Capriotti's	1,748 SF
05	ISI Elite Training	2,554 SF
06	Dragon China	1,920 SF
07	Cost Cutters	1,120 SF
08	Tobacco Land & Vape	2,178 SF
09	Kumon	2,055 SF
10	Dollar General	9,950 SF
11	Hamrick's	47,775 SF
12	ABC Liquor	4,200 SF

1704