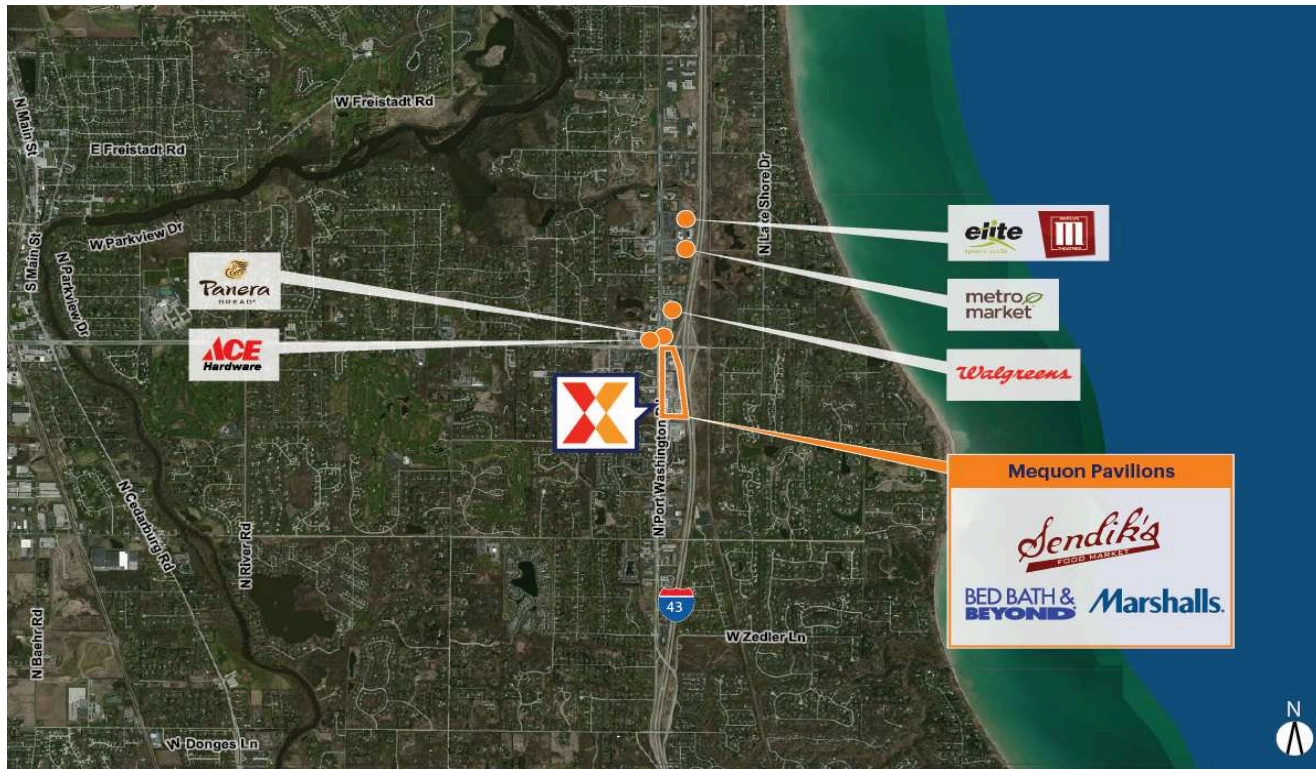


Mequon Pavilions

Milwaukee-Waukesha, WI

43.2178, -87.9229

10930 N Port Washington Road | Mequon, WI 53092-5031



Center Size: 219,230 SF



| Demographics | 1 Mile | 3 Mile | 5 Mile |
|--------------|-----------|-----------|-----------|
| | 3,868 | 21,793 | 57,603 |
| | 1,637 | 9,062 | 24,180 |
| | \$175,201 | \$160,054 | \$126,904 |

Largest shopping center in Mequon

Highly trafficked center with Sendik's Food Market drawing an estimated 6,000 visits/day and 2.2M+ visits/year (based on Placer.ai)

Surrounded by an affluent population with an average household income of \$160,000+ within a 3-mile radius

Strong lineup of national retailers including Marshalls, Bed Bath & Beyond and Massage Envy

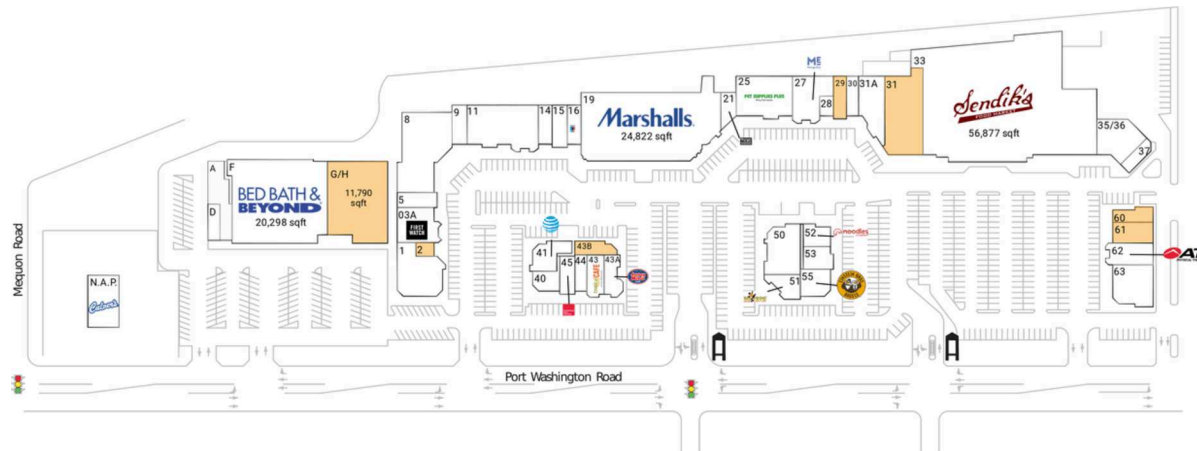
Recent multi million dollar renovation to facades and common areas

Mequon Pavilions

Milwaukee-Waukesha, WI

43.2178, -87.9229

10930 N Port Washington Road | Mequon, WI 53092-5031



Available Space

| | |
|-----|-----------|
| G/H | 11,790 SF |
| 2 | 592 SF |
| 29 | 1,498 SF |
| 31 | 6,500 SF |
| 43B | 1,382 SF |
| 60 | 1,502 SF |
| 61 | 2,656 SF |

Current Retailers

| | | | | | |
|--------|---------------------------|-----------|-------|---------------------------------|-----------|
| A | CycleBar | 3,284 SF | 33 | Sendik's Food Market | 56,877 SF |
| D | One Hour Martinizing | 1,167 SF | 35/36 | Hassless Mattress | 3,357 SF |
| F | Bed Bath & Beyond | 20,298 SF | 37 | Elite Nutrition | 950 SF |
| N.A.P. | Culver's | 0 SF | 40 | Shopko Optical Center | 1,455 SF |
| 1 | Chancery Restaurant | 5,808 SF | 41 | AT&T | 2,265 SF |
| 03A | First Watch | 4,030 SF | 43 | Tropical Smoothie Cafe | 1,574 SF |
| 5 | Hart Hearing Care Center | 1,376 SF | 43A | Jersey Mike's Subs | 1,491 SF |
| 8 | D1 Training | 9,038 SF | 44 | Great Clips | 1,332 SF |
| 9 | Mathnasium | 1,540 SF | 45 | European Wax Center | 1,320 SF |
| 11 | Pure Hockey | 8,423 SF | 50 | Game Universe | 4,300 SF |
| 14 | Cell Phone Repair | 1,480 SF | 51 | Big Frog Custom T-Shirts & More | 1,869 SF |
| 15 | Wild Birds Unlimited | 1,673 SF | 52 | Noodles & Company | 2,352 SF |
| 16 | StretchLab | 1,540 SF | 53 | The Cluckery | 1,155 SF |
| 19 | Marshalls | 24,822 SF | 52 | Einstein Bros. | 2,351 SF |
| 21 | The Joint Chiropractic | 1,285 SF | 55 | Bagels | |
| 25 | Pet Supplies Plus | 6,963 SF | 62 | ATI Physical Therapy | 2,764 SF |
| 27 | Massage Envy | 3,731 SF | 63 | Neroli Salon And Spa | 4,021 SF |
| 28 | Edward Jones | 700 SF | | | |
| 30 | The UPS Store | 1,390 SF | | | |
| 31A | Fred Astaire Dance Studio | 5,012 SF | | | |

4175