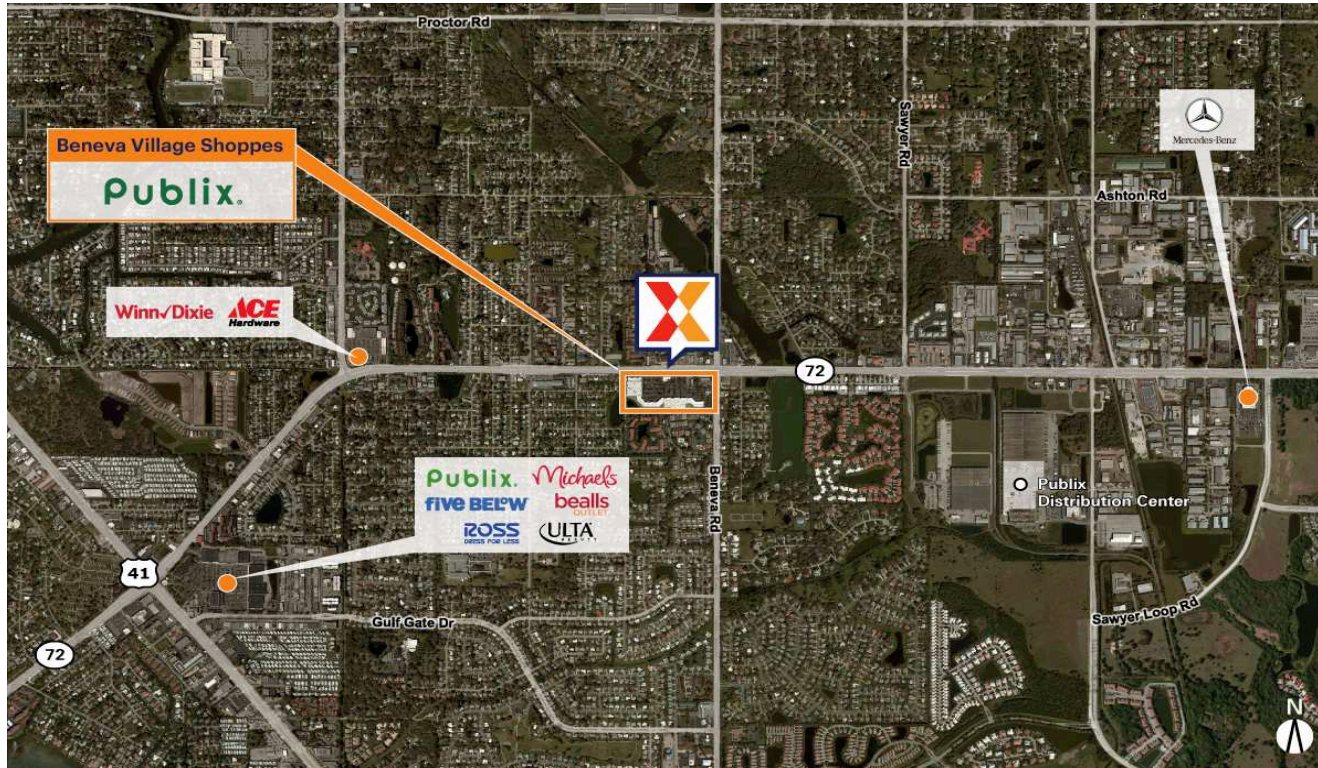


Beneva Village Shoppes

North Port-Bradenton-Sarasota, FL

27.2685, -82.4996
3428 Clark Road | Sarasota, FL 34231



Center Size: 144,078 SF



Demographics	1 Mile	3 Mile	5 Mile
	10,749	74,824	147,516
	5,055	35,512	68,022
	\$75,277	\$95,566	\$102,918

Publix-anchored shopping center with top national brands including Harbor Freight Tools, Great Clips & Phenix Salon Suites

Strong daytime population of 75,000+ within 3 miles, including high velocity Publix distribution warehouse

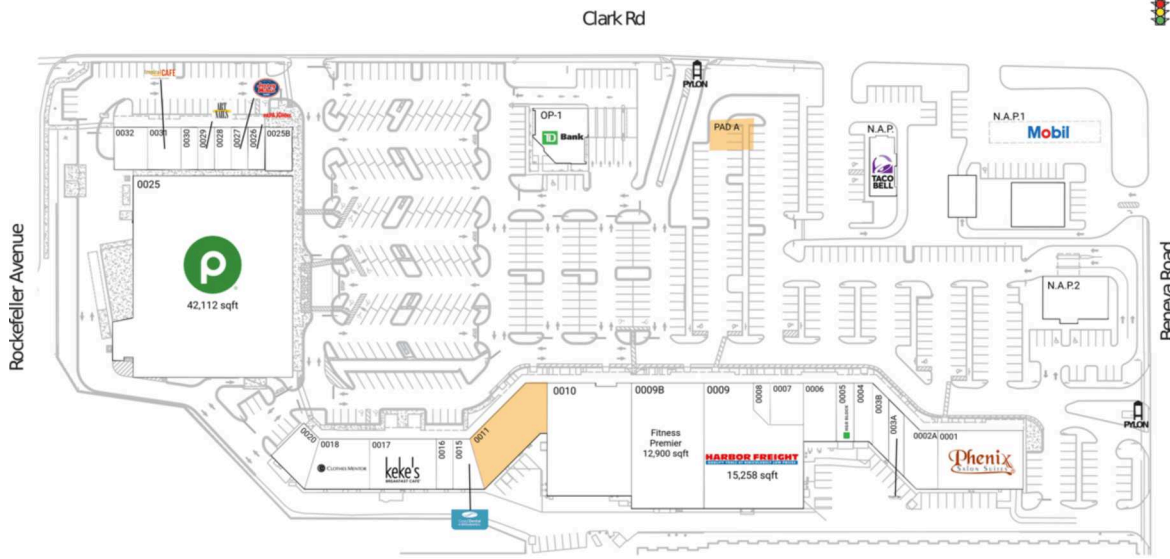
High visibility from 26,000+ VPD on Beneva Rd and 41,500+ on Clark Rd; just 2.5 miles W of I-75

Close proximity to 806-bed Sarasota Memorial Hospital, Sarasota County Technical Institute (SCTI) and Sarasota Square Mall

Beneva Village Shoppes

North Port-Bradenton-Sarasota, FL

27.2685, -82.4996
3428 Clark Road | Sarasota, FL 34231



Available Space

PAD A	0 SF
0011	6,228 SF

Current Retailers

N.A.P.	Taco Bell	0 SF
N.A.P.1	Mobil	0 SF
N.A.P.2	N.A.P.	0 SF
OP-1	TD Bank	3,711 SF
0001	Phenix Salon Suites	7,170 SF
0002A	Gulf Coast Physical Therapy	2,811 SF
003A	Great Clips	1,420 SF
003B	Publix Employees Federal Credit Union	1,401 SF
0004	Cacio Italian Bistro	1,559 SF
0005	H&R Block	1,478 SF
0006	Curry Station	2,796 SF
0007	Revitalize Chiropractic	1,963 SF
0008	Audibel	836 SF
0009	Harbor Freight	15,258 SF
0009B	Fitness Premier	12,900 SF
0010	ArchWell Health	13,500 SF
0015	Coast Dental	1,733 SF
0016	Pedego Sarasota	1,200 SF
0017	Keke's Breakfast Cafe	4,800 SF
0018	Clothes Mentor	4,133 SF
0020	K-Nam	2,251 SF
0025	Publix	42,112 SF
0025B	Yokoso Ramen	1,516 SF
0026	Papa John's	1,000 SF
0027	Jersey Mike's Subs	1,000 SF
0028	Hair Cuttery	1,000 SF
0029	Nails	1,000 SF
0030	MetroPCS Wireless	1,000 SF
0031	Tropical Smoothie Cafe	1,900 SF
0032	Tijuana Flats	1,800 SF

1838