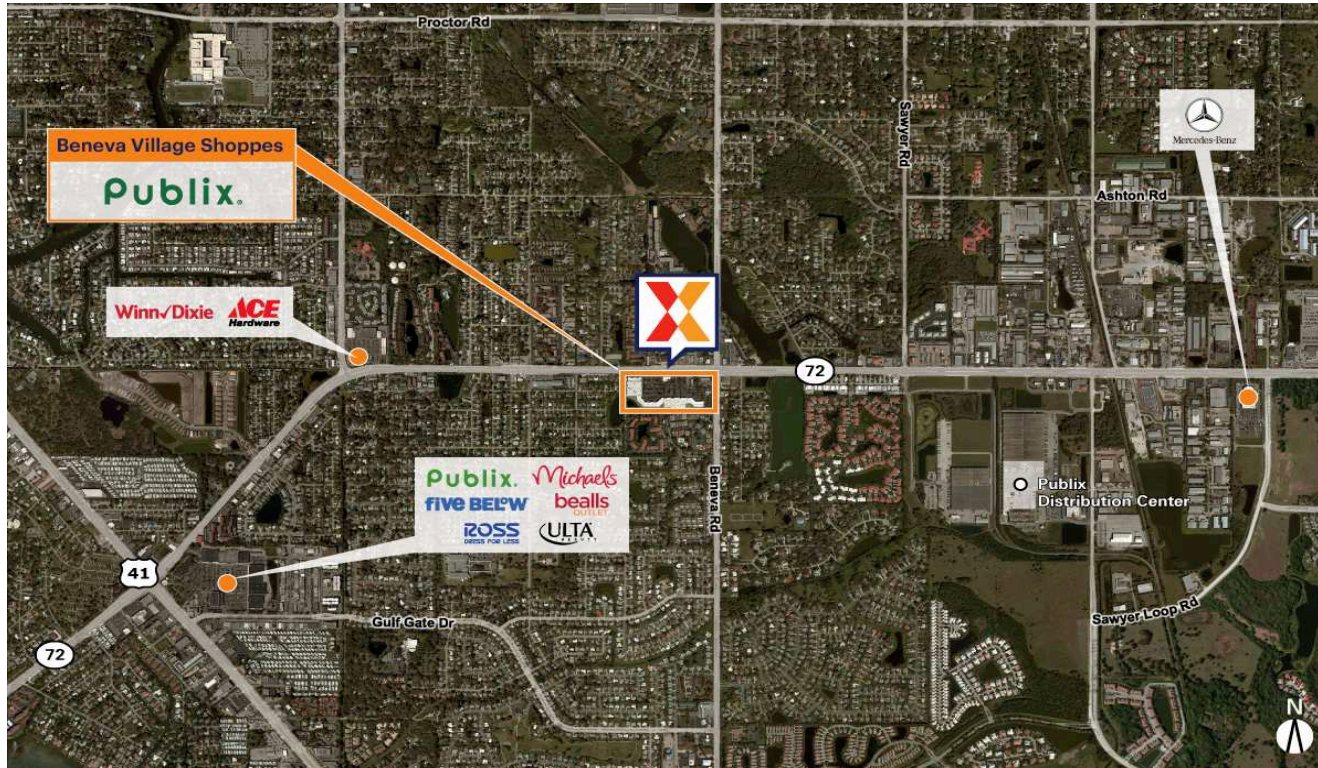


Beneva Village Shoppes

North Port-Bradenton-Sarasota, FL

27.2685, -82.4996
3428 Clark Road | Sarasota, FL 34231



Center Size: 144,078 SF



| Demographics | 1 Mile | 3 Mile | 5 Mile |
|--------------|-----------|-----------|-----------|
| | 10,623 | 74,730 | 147,331 |
| | 4,991 | 35,481 | 67,935 |
| | \$103,289 | \$119,760 | \$129,401 |

Publix-anchored shopping center with national brands including Harbor Freight Tools and Phenix Salon Suites

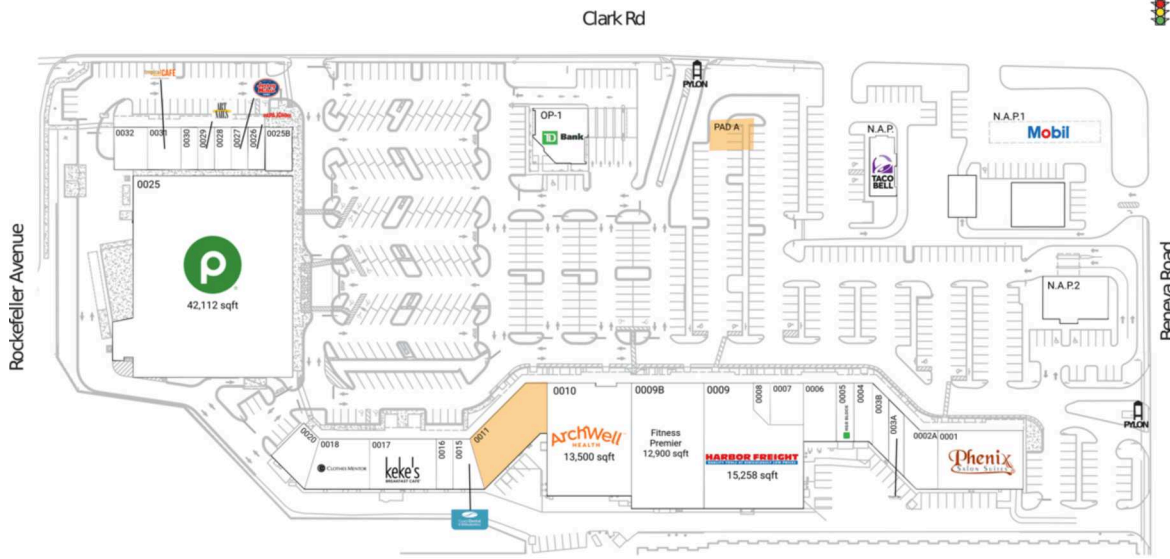
Strong daytime population of 80K+ within a 3-mile radius, with a Publix distribution warehouse located less than one mile away

High visibility from 22K+ vehicles daily on Beneva Rd and 36K+ on Clark Rd; just 2.5 miles west of I-75 (Kalibrate 2021)

Beneva Village Shoppes

North Port-Bradenton-Sarasota, FL

27.2685, -82.4996
3428 Clark Road | Sarasota, FL 34231



Available Space

| | |
|-------|----------|
| PAD A | 0 SF |
| 0011 | 6,228 SF |

Current Retailers

| | | |
|---------|---------------------------------------|-----------|
| N.A.P. | Taco Bell | 0 SF |
| N.A.P.1 | Mobil | 0 SF |
| N.A.P.2 | N.A.P. | 0 SF |
| OP-1 | TD Bank | 3,711 SF |
| 0001 | Phenix Salon Suites | 7,170 SF |
| 0002A | Gulf Coast Physical Therapy | 2,811 SF |
| 003A | Great Clips | 1,420 SF |
| 003B | Publix Employees Federal Credit Union | 1,401 SF |
| 0004 | Cacio Italian Bistro | 1,559 SF |
| 0005 | H&R Block | 1,478 SF |
| 0006 | Curry Station | 2,796 SF |
| 0007 | Revitalize Chiropractic | 1,963 SF |
| 0008 | Audibel | 836 SF |
| 0009 | Harbor Freight | 15,258 SF |
| 0009B | Fitness Premier | 12,900 SF |
| 0010 | ArchWell Health | 13,500 SF |
| 0015 | Coast Dental | 1,733 SF |
| 0016 | Pedego Sarasota | 1,200 SF |
| 0017 | Keke's Breakfast Cafe | 4,800 SF |
| 0018 | Clothes Mentor | 4,133 SF |
| 0020 | K-Nam | 2,251 SF |
| 0025 | Publix | 42,112 SF |
| 0025B | Yokoso Ramen | 1,516 SF |
| 0026 | Papa John's | 1,000 SF |
| 0027 | Jersey Mike's Subs | 1,000 SF |
| 0028 | Hair Cuttery | 1,000 SF |
| 0029 | Nails | 1,000 SF |
| 0030 | MetroPCS Wireless | 1,000 SF |
| 0031 | Tropical Smoothie Cafe | 1,900 SF |
| 0032 | Tijuana Flats | 1,800 SF |

1838