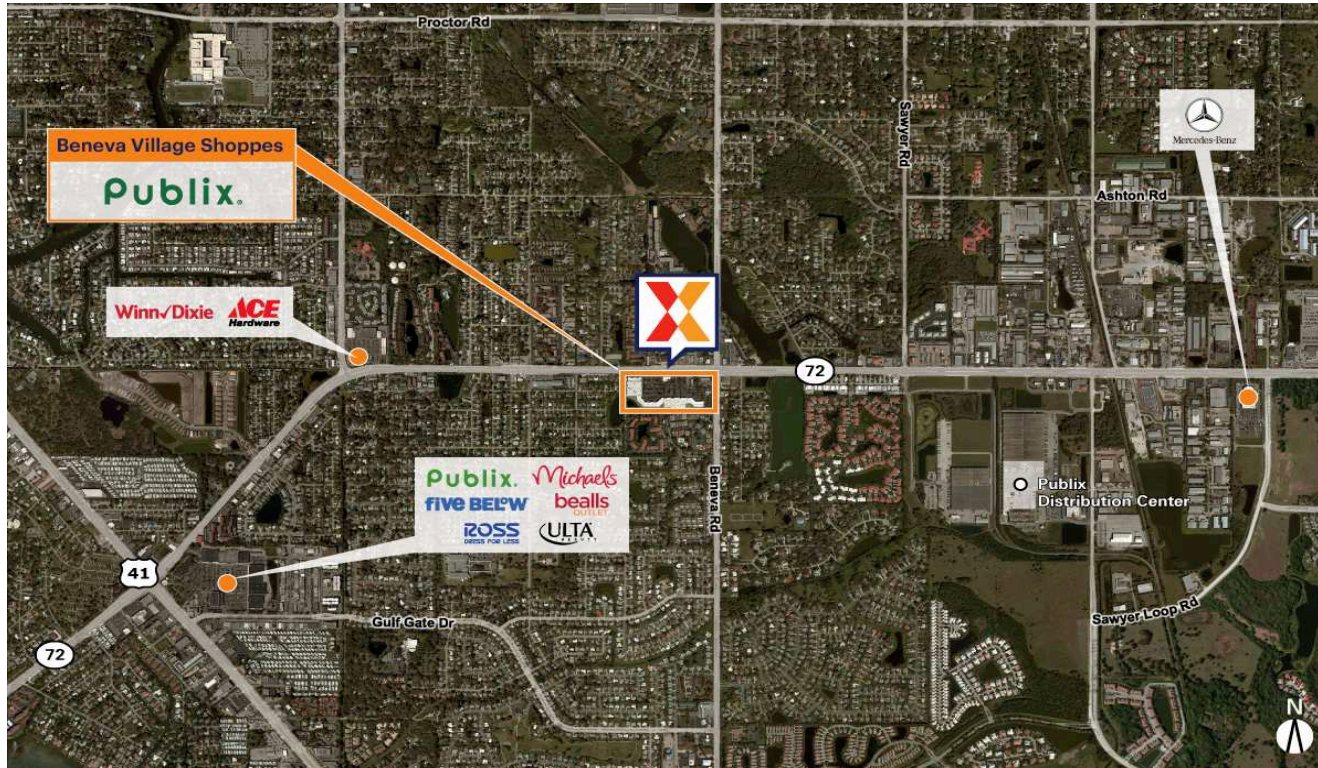


# Beneva Village Shoppes

North Port-Bradenton-Sarasota, FL

27.2685, -82.4996  
3428 Clark Road | Sarasota, FL 34231



Center Size: 144,078 SF



Demographics	1 Mile	3 Mile	5 Mile
	10,623	74,730	147,331
	4,991	35,481	67,935
	\$103,289	\$119,760	\$129,401

Publix-anchored shopping center with national brands including Harbor Freight Tools and Phenix Salon Suites

Strong daytime population of 80K+ within a 3-mile radius, with a Publix distribution warehouse located less than one mile away

High visibility from 22K+ vehicles daily on Beneva Rd and 36K+ on Clark Rd; just 2.5 miles west of I-75 (Kalibrate 2021)

# Beneva Village Shoppes

North Port-Bradenton-Sarasota, FL

27.2685, -82.4996  
3428 Clark Road | Sarasota, FL 34231



## Available Space

OPO 1	0 SF
0011	6,228 SF

## Current Retailers

N.A.P.	Taco Bell	0 SF
N.A.P.1	Mobil	0 SF
N.A.P.2	N.A.P.	0 SF
OP-1	TD Bank	3,711 SF
0001	Phenix Salon Suites	7,170 SF
0002A	Gulf Coast Physical Therapy	2,811 SF
003A	Great Clips	1,420 SF
003B	Publix Employees Federal Credit Union	1,401 SF
0004	Cacio Italian Bistro	1,559 SF
0005	H&R Block	1,478 SF
0006	Curry Station	2,796 SF
0007	Revitalize Chiropractic	1,963 SF
0008	Audibel	836 SF
0009	Harbor Freight	15,258 SF
0009B	Fitness Premier	12,900 SF
0010	ArchWell Health	13,500 SF
0015	Coast Dental	1,733 SF
0016	Pedego Sarasota	1,200 SF
0017	Keke's Breakfast Cafe	4,800 SF
0018	Clothes Mentor	4,133 SF
0020	K-Nam	2,251 SF
0025	Publix	42,112 SF
0025B	Yokoso Ramen	1,516 SF
0026	Papa John's	1,000 SF
0027	Jersey Mike's Subs	1,000 SF
0028	Hair Cuttery	1,000 SF
0029	Nails	1,000 SF
0030	MetroPCS Wireless	1,000 SF
0031	Tropical Smoothie Cafe	1,900 SF
0032	Tijuana Flats	1,800 SF