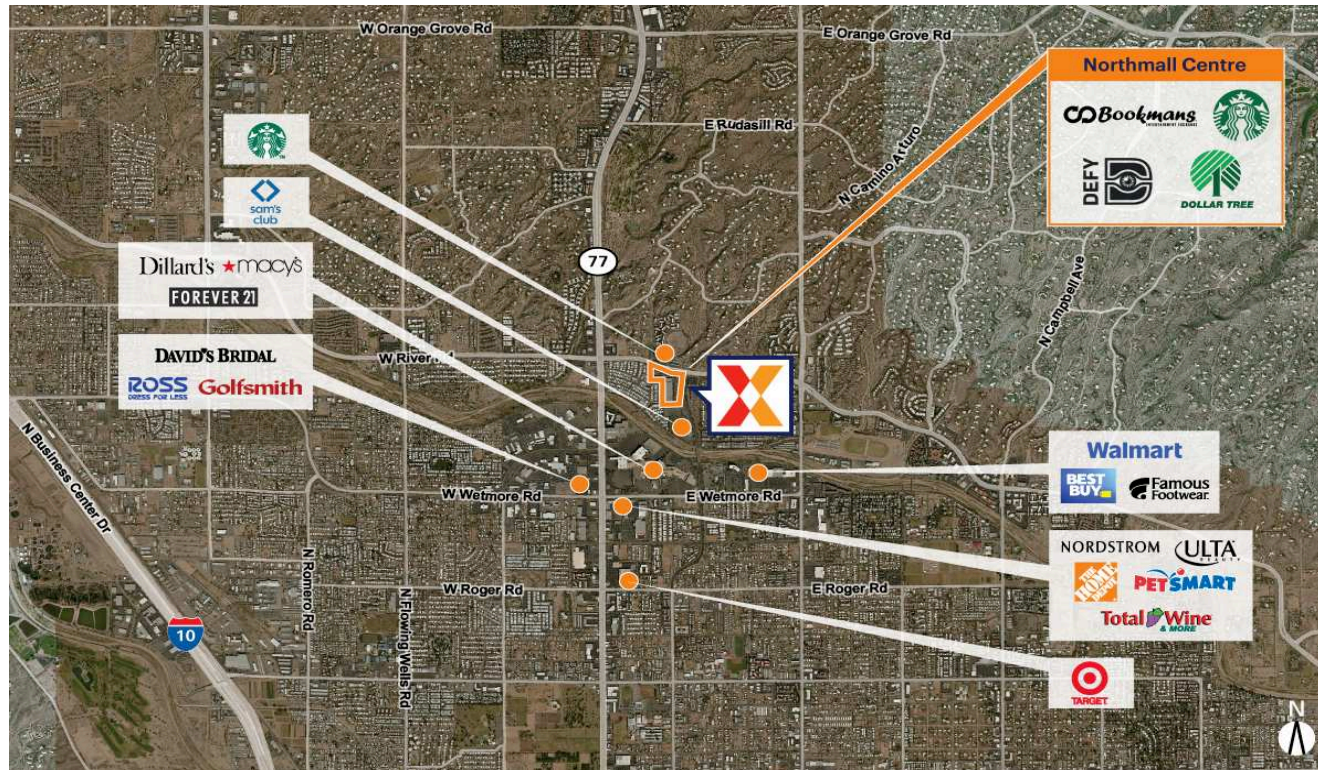


# Northmall Centre

Tucson, AZ

32.2947, -110.972  
4881 North Stone | Tucson, AZ 85704



**Center Size:** 165,350 SF



Demographics	1 Mile	3 Mile	5 Mile
	9,971	94,312	222,246
	4,957	43,767	99,744
	\$60,291	\$66,082	\$70,955

High visibility from 35,000+ vehicles daily on the thoroughfare East River Rd

Strategically located in close proximity to 1.3MM SF Tucson Mall anchored by Dillard's, Macy's and Forever 21

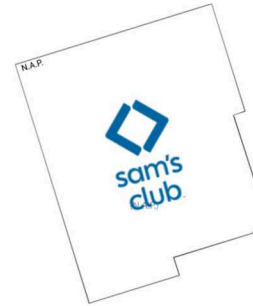
169,000 SF center anchored by the only Sam's Club in Tucson, plus top national retailers drawing an estimated 12,600+ visits/day and over 4.6M+ visits/year (based on CreditIntell)

Big Box opportunity available: 34,224 square feet space that was formerly occupied by Stein Mart.

# Northmall Centre

Tucson, AZ

32.2947, -110.972  
4881 North Stone | Tucson, AZ 85704



## Available Space

FS3 5,665 SF

## Current Retailers

FS1	Starbucks	2,200 SF
FS2	Scordato's Pizzeria	5,997 SF
N.A.P.	Sam's Club	0 SF
01	Asian 1 Buffet	7,976 SF
02	Crossfit 646	4,132 SF
04	Big 5 Sporting Goods	15,094 SF
05	Ace Pickleball Club	34,224 SF
06	Defy Tucson	41,513 SF
07A	Bookmans Entertainment Exchange	20,138 SF
07B	Dollar Tree	10,182 SF
08	Caremore Medical	18,229 SF

1708