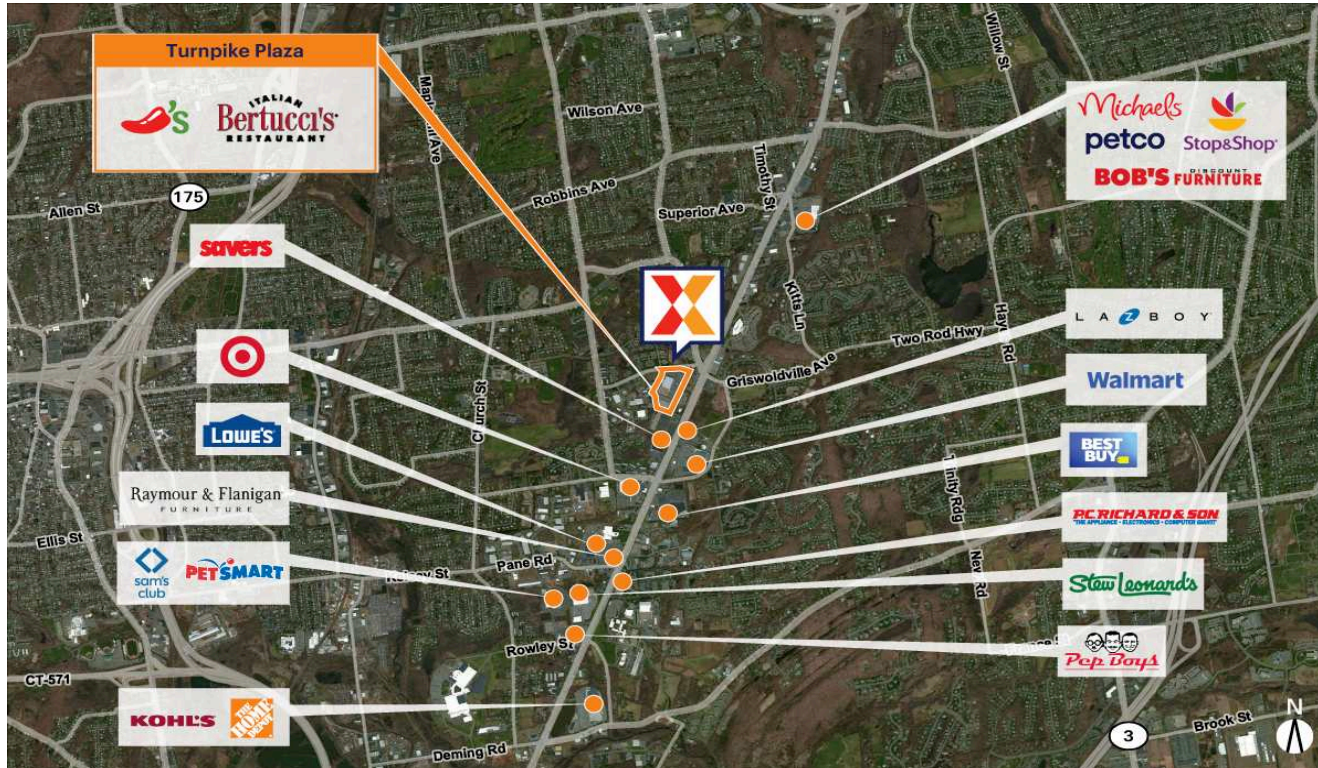


# Turnpike Plaza

Hartford-West Hartford-East Hartford, CT

41.6685, -72.7209

2985 Berlin Turnpike | Newington, CT 06111



Center Size: 149,894 SF



Demographics	1 Mile	3 Mile	5 Mile
	7,961	72,074	201,312
	3,444	28,617	81,622
	\$98,839	\$91,898	\$89,783

Price Chopper-anchored center with other national brands including Chili's Grill & Bar, Supercuts & LaserMaxx

High visibility on Berlin Turnpike from 38,000+ vehicles daily (Kalibrate 2018)

Affluent and well-educated trade area with an average household income of \$110,800+ and 37% college educated persons within a 3-mile radius

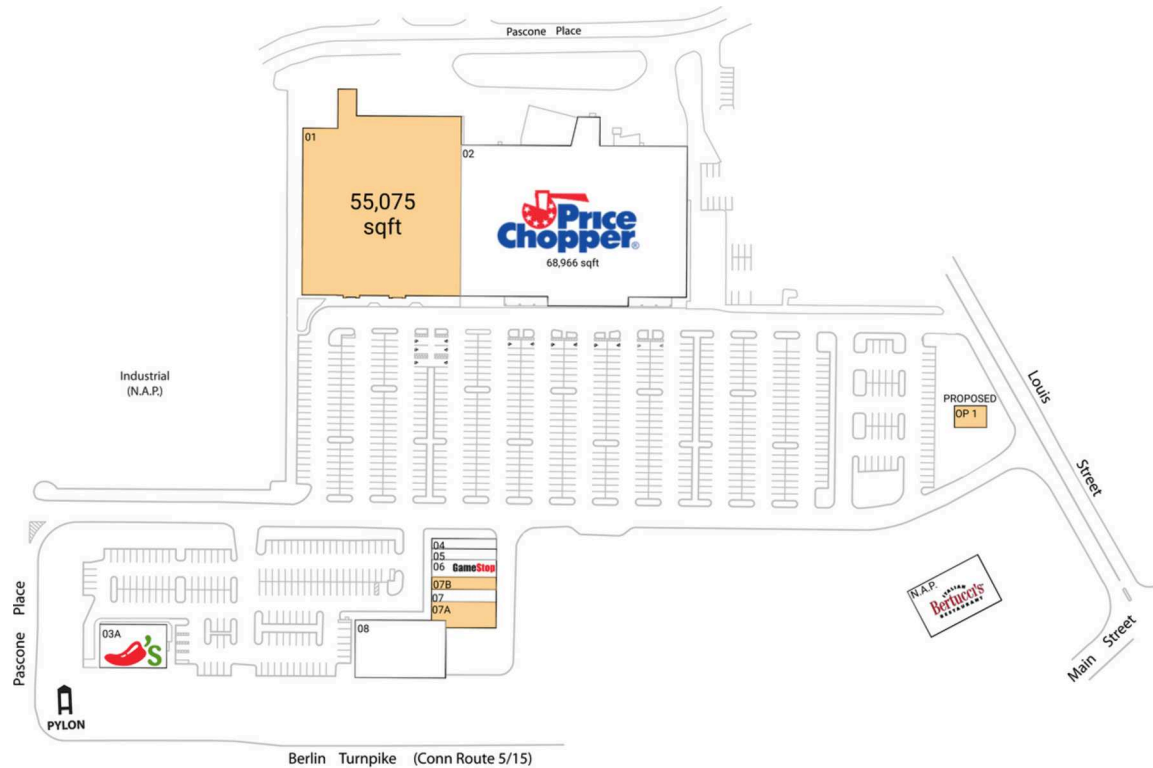
Close proximity to Central Connecticut State University & Charter Oak State College with a combined enrollment of 12,200+ students

# Turnpike Plaza

Hartford-West Hartford-East Hartford, CT

41.6685, -72.7209

2985 Berlin Turnpike | Newington, CT 06111



## Available Space

01	55,075 SF
07A	2,731 SF
07B	1,542 SF

## Pad Opportunities

OP 1 Pad	0 SF/0
----------	--------

## Current Retailers

N.A.P.	Bertucci's	0 SF
02	Price Chopper	68,966 SF
03A	Chili's Grill & Bar	5,653 SF
04	Taro Taro	1,257 SF
05	Supercuts	1,350 SF
06	GameStop	2,173 SF
07	EnL Nail Bar	1,547 SF
08	LaserMaxx	9,600 SF

5146