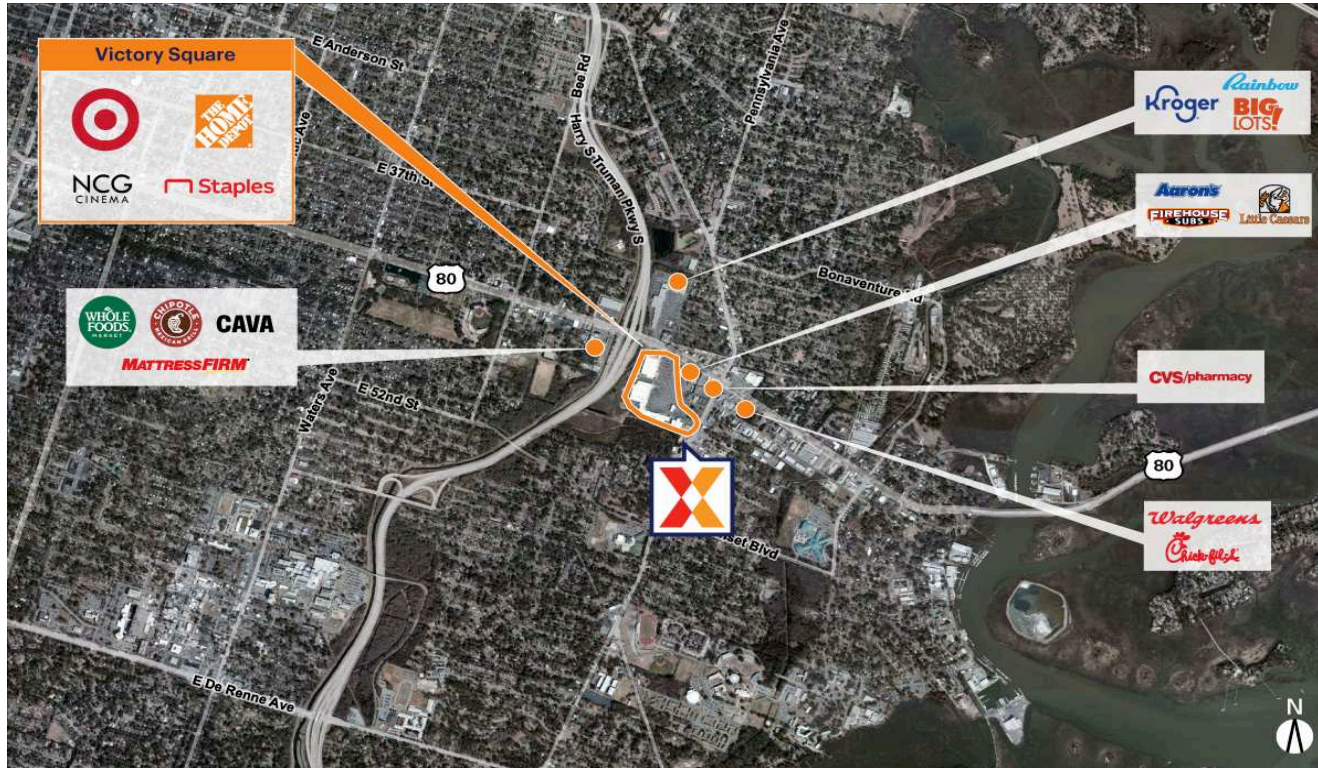


Victory Square

Savannah, GA

32.0407, -81.0671

1901 East Victory Dr. | Savannah, GA 31401



Center Size: 113,217 SF



| Demographics | 1 Mile | 3 Mile | 5 Mile |
|--------------|----------|----------|----------|
| | 12,854 | 77,862 | 125,911 |
| | 5,133 | 32,853 | 51,064 |
| | \$59,778 | \$79,301 | \$79,369 |

Strong lineup of national retailers including Target, Dollar Tree, Rainbow & Citi Trends, drawing an estimated 15,700 visits/day and 5.7M+ annual visits (based on CreditIntell)

Surrounded by a dense population of 77,000+ within 3 miles

Close proximity to downtown Savannah and direct access to Harry S Truman Pkwy

Easily accessible center from multiple points of ingress/egress including two signalized entrances

Victory Square

Savannah, GA

32.0407, -81.0671
1901 East Victory Dr. | Savannah, GA 31401



Available Space

07 1,600 SF

Current Retailers

| | | |
|----------|--------------------------------------|-----------|
| FS2 | NCG Cinema | 31,628 SF |
| N.A.P. | The Home Depot | 0 SF |
| N.A.P.1 | Target | 0 SF |
| N.A.P.10 | Bridgestone/Firestone | 0 SF |
| N.A.P.2 | SunTrust Bank | 0 SF |
| N.A.P.3 | N.A.P. | 0 SF |
| N.A.P.4 | AT&T | 0 SF |
| N.A.P.5 | Little Caesars Pizza | 0 SF |
| N.A.P.6 | State Farm | 0 SF |
| N.A.P.7 | Firehouse Subs | 0 SF |
| N.A.P.8 | Zaxby's | 1,600 SF |
| N.A.P.9 | CVS/pharmacy | 1 SF |
| 01 | Dragon's Dream Dumplings | 1,600 SF |
| 02A/02B | The Blood Connection | 3,200 SF |
| 03 | H&R Block | 1,600 SF |
| 04A | Staples | 20,388 SF |
| 04B | Dollar Tree | 10,320 SF |
| 05 | Hibbett Sports | 4,780 SF |
| 08 | America's Best Contacts & Eyeglasses | 3,200 SF |
| 09 | OD Crab House | 4,800 SF |
| 10 | New York Boutique | 1,640 SF |
| 11 | Nail Boutique & Spa | 1,475 SF |
| 12/13/14 | Citi Trends | 12,953 SF |
| 15 | Rainbow | 6,233 SF |
| 101 | Cricket | 1,200 SF |
| 102 | Geneva's Chicken & Cornbread | 2,400 SF |
| 104 | Sport Clips | 1,200 SF |
| 105 | Boost Mobile | 1,200 SF |
| 106 | Stretch Zone | 1,800 SF |



1077