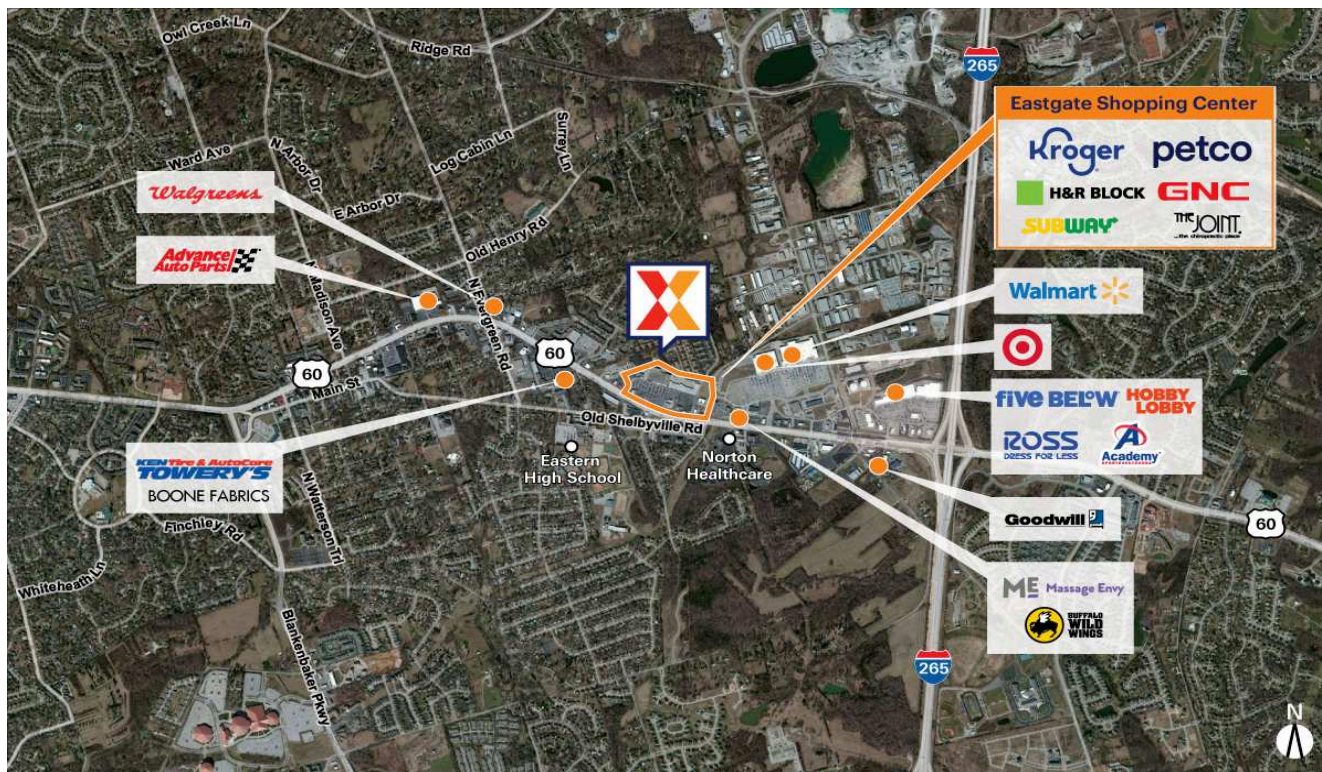


Eastgate Shopping Center

Louisville/Jefferson County, KY-IN

38.2449, -85.5205
12501 Shelbyville Road | Louisville, KY 40243



Center Size: 174,947 SF



Demographics	1 Mile	3 Mile	5 Mile
	7,048	47,624	140,519
	3,065	20,129	59,162
	\$88,929	\$117,108	\$106,740

One of the busiest Kroger stores in Louisville, helping the center draw an estimated 10,200 visits/day and over 3.7M annually (based on CreditIntell)

High visibility from Shelbyville Rd from 35,000+ vehicles daily and easy access to I-265

Surrounded by an affluent population with an average household income of \$117,000+ within 3 miles

Located approximately 5.8 miles east of Mall of St. Matthews, the best mall in the metro market

Eastgate Shopping Center

Louisville/Jefferson County, KY-IN

38.2449, -85.5205
12501 Shelbyville Road | Louisville, KY 40243



Available Space

PAD A	0 SF
07	1,600 SF

Current Retailers

ATM	Fifth Third Bank	600 SF
FUEL	Kroger Fuel Center	0 SF
N.A.P.	7 Brew Coffee	0 SF
N.A.P.1	Taco Bell	0 SF
N.A.P.2	PNC Bank	0 SF
N.A.P.3	Great Flood Brewing	0 SF
N.A.P.4	Discount Tire Company	0 SF
N.A.P.5	PPG Paint	0 SF
OP2	Kort Physical Therapy	7,500 SF
WASH	Kroger Car Wash	0 SF
1-2	Carali's Rotisserie Chicken	2,671 SF
03	Papa Murphy's	1,200 SF
04	The Joint Chiropractic	1,068 SF
05	Oriental Palace	1,571 SF
06A	CAV Fitness	2,924 SF
06B	Hotxorx	2,426 SF
08	Subway	1,520 SF
09	Clay Oven Indian Restaurant	2,506 SF
10-16	Kroger	100,041 SF
18	Kroger Liquor Store	7,230 SF
20	H&R Block	1,280 SF
21	Sport Clips	1,200 SF
22	HobbyTown	2,530 SF
23	GNC	1,600 SF
24A	Learning Express	3,000 SF
24B	Binelli Golf Carts	5,000 SF
26	Rumble Boxing	2,700 SF
26A	CPR (Cell Phone Repair)	1,140 SF
27	Sun Tan City	2,800 SF
28	Hollywood Nails	1,360 SF
29	Sola Salon	6,080 SF
30	Petco	14,000 SF

1097