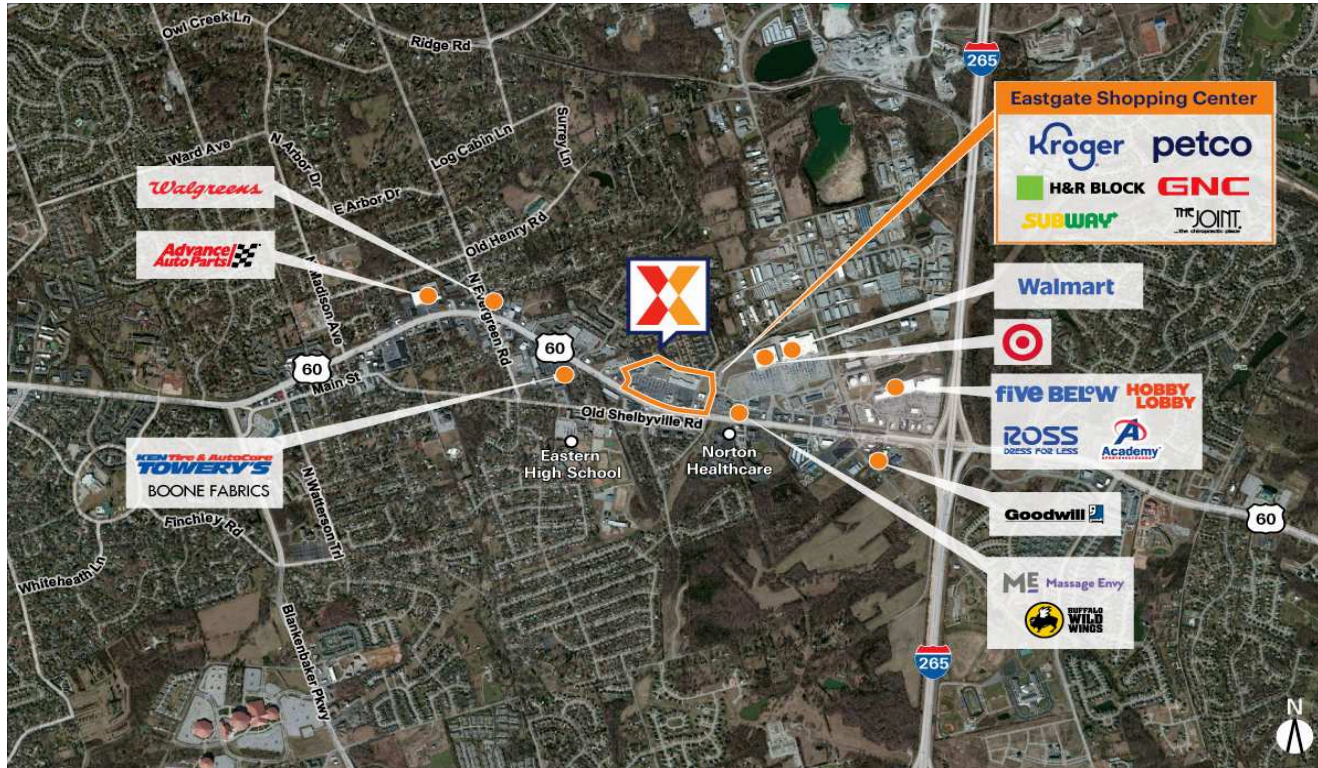


Eastgate Shopping Center

Louisville/Jefferson County, KY-IN

38.2449, -85.5205
12501 Shelbyville Road | Louisville, KY 40243



Center Size: 174,842 SF



| Demographics | 1 Mile | 3 Mile | 5 Mile |
|--------------|----------|-----------|-----------|
| | 7,048 | 47,624 | 140,519 |
| | 3,065 | 20,129 | 59,162 |
| | \$88,929 | \$117,108 | \$106,740 |

Ranked as one of Louisville's most highly trafficked shopping center with 62K+ visits daily and 3.2M+ annually (Placer.ai 2024)

Surrounded by an affluent, educated market with an average household income of \$135K+ and 58% with a college education within a 3-mile radius

Benefits from a strong daytime population of 62K+

High visibility from 33K+ vehicles daily on Shelbyville Rd and easy access to I-265 (Kalibrate 2022)

Eastgate Shopping Center

Louisville/Jefferson County, KY-IN

38.2449, -85.5205
12501 Shelbyville Road | Louisville, KY 40243



Available Space

| | |
|-------|----------|
| OPO 1 | 0 SF |
| 22 | 2,530 SF |
| 24A | 3,000 SF |

Current Retailers

| | | |
|---------|-----------------------------|------------|
| ATM | Fifth Third Bank | 600 SF |
| FUEL | Kroger Fuel Center | 0 SF |
| N.A.P. | 7 Brew Coffee | 0 SF |
| N.A.P.1 | Taco Bell | 0 SF |
| N.A.P.2 | PNC Bank | 0 SF |
| N.A.P.3 | Great Flood Brewing | 0 SF |
| N.A.P.4 | Discount Tire Company | 0 SF |
| N.A.P.5 | PPG Paint | 0 SF |
| OP2 | Kort Physical Therapy | 7,500 SF |
| WASH | Kroger Car Wash | 0 SF |
| 1-2 | Carali's Rotisserie Chicken | 2,671 SF |
| 03 | Papa Murphy's | 1,200 SF |
| 04 | The Joint Chiropractic | 1,068 SF |
| 05 | Oriental Palace | 1,571 SF |
| 06A | CAV Fitness | 2,924 SF |
| 06B | Hotxrx | 2,426 SF |
| 07 | Wingstop | 1,600 SF |
| 08 | Subway | 1,520 SF |
| 09 | Clay Oven Indian Restaurant | 2,506 SF |
| 10-16 | Kroger | 100,041 SF |
| 18 | Kroger Liquor Store | 7,230 SF |
| 20 | H&R Block | 1,280 SF |
| 21 | Sport Clips | 1,200 SF |
| 23 | GNC | 1,600 SF |
| 24B | Binelli Golf Carts | 5,000 SF |
| 26 | Rumble Boxing | 2,700 SF |
| 26A | CPR (Cell Phone Repair) | 1,140 SF |
| 27 | Sun Tan City | 2,800 SF |
| 28 | Hollywood Nails | 1,360 SF |
| 29 | Sola Salon | 6,080 SF |
| 30 | Petco | 14,000 SF |

1097