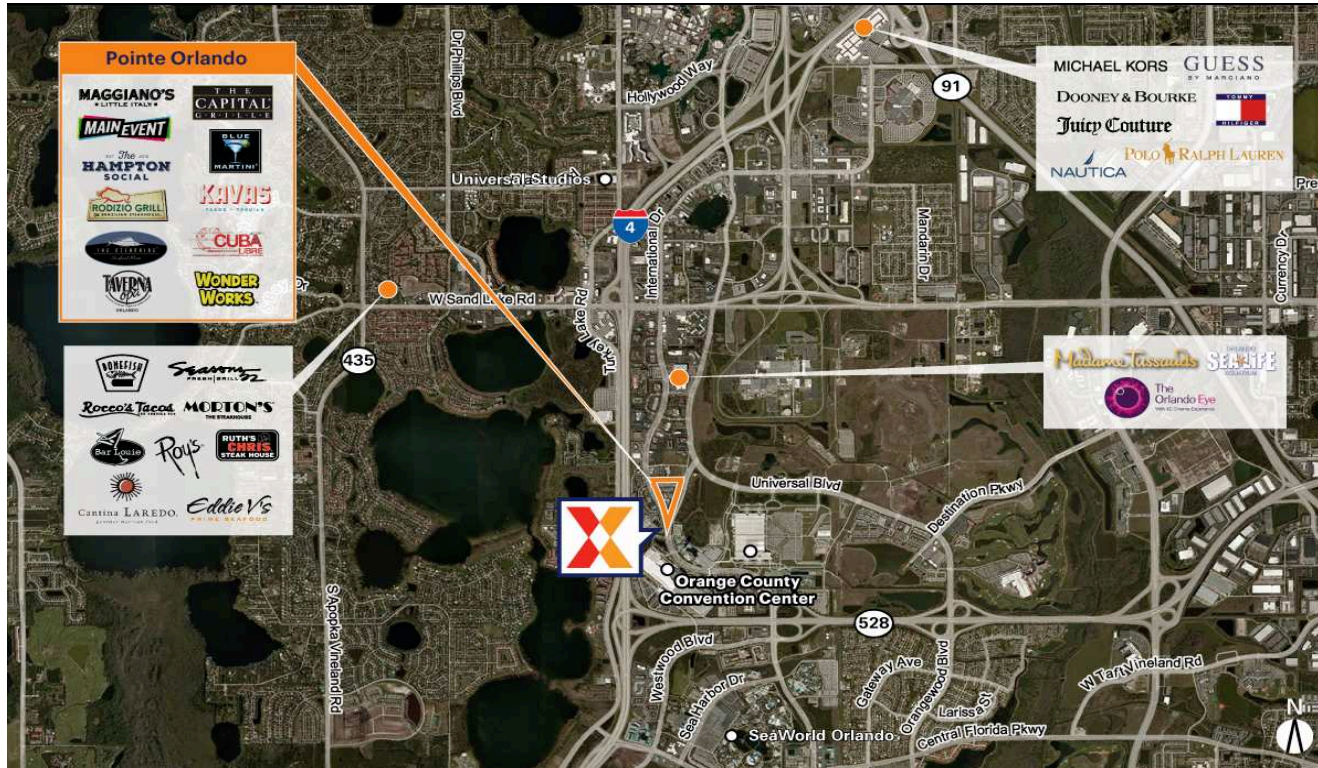


# Pointe Orlando

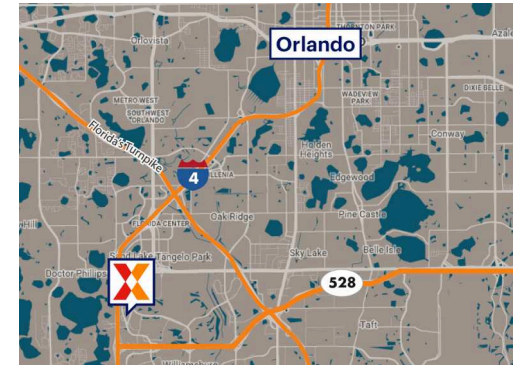
Orlando-Kissimmee-Sanford, FL

28.4324, -81.471

9101 International Drive | Orlando, FL 32819



Center Size: 413,784 SF



Demographics	1 Mile	3 Mile	5 Mile
	1,983	43,585	157,13
	695	17,333	57,683
	\$177,759	\$124,814	\$98,05

<http://www.pointeorlando.com/>

Rent restaurant space and retail locations in highly visible shopping center with 34,000+ vehicles daily on Orlando's primary tourism corridor, International Drive

Surrounded by over 125 hotels and adjacent to the nation's third largest convention center drawing 1.5M attendees annually, the area generates 7.7M overnight & day visitors

High-volume dining and entertainment venues including The Capital Grille, Maggiano's Little Italy, Rodizio Brazilian Steakhouse, Kavaz Tacos + Tequila, Cuba Libre Restaurant and Rum Bar, Hampton Social, and Blue Martini drawing an estimated 9,200+ visits/day and 3.4M annual visits (based on CreditIntell)

Specialty retail space and pop-up shop locations available

# Pointe Orlando

Orlando-Kissimmee-Sanford, FL

28.4324, -81.471

9101 International Drive | Orlando, FL 32819



## Available Space

A3	0 SF	232	0 SF
E3A	0 SF	236	0 SF
101/102	0 SF	236A	0 SF
104a	0 SF	246	0 SF
106	0 SF	248	0 SF
108	0 SF	250	0 SF
111	0 SF	300A	0 SF
112	0 SF	300C	0 SF
200	0 SF	302	0 SF
203	0 SF	302A	0 SF
204	0 SF	328/330	0 SF
206	0 SF	332R	0 SF
208	0 SF	334R	0 SF
209	0 SF	500R	0 SF
210	0 SF	502	0 SF
211	0 SF	504	0 SF
212	0 SF	602	0 SF
214	0 SF	604	0 SF
218	0 SF	606	0 SF
224	0 SF	608	0 SF
226	0 SF	720	13,199 SF
227	0 SF	730	0 SF
228	0 SF	741A	0 SF
229	0 SF	1012	0 SF
230/230A	0 SF		
231	0 SF		

## Current Retailers

E3A	Future Cordish Concept	8,708 SF	740	Blue Sports & Social	12,930 SF
312	Regal Cinemas	67,726 SF	741	PBR Cowbo Bar	7,737 SF
326	Future Cordish Concept	6,483 SF	742	Taverna Opa	5,500 SF
710	Improv & Fatfish	14,369 SF			

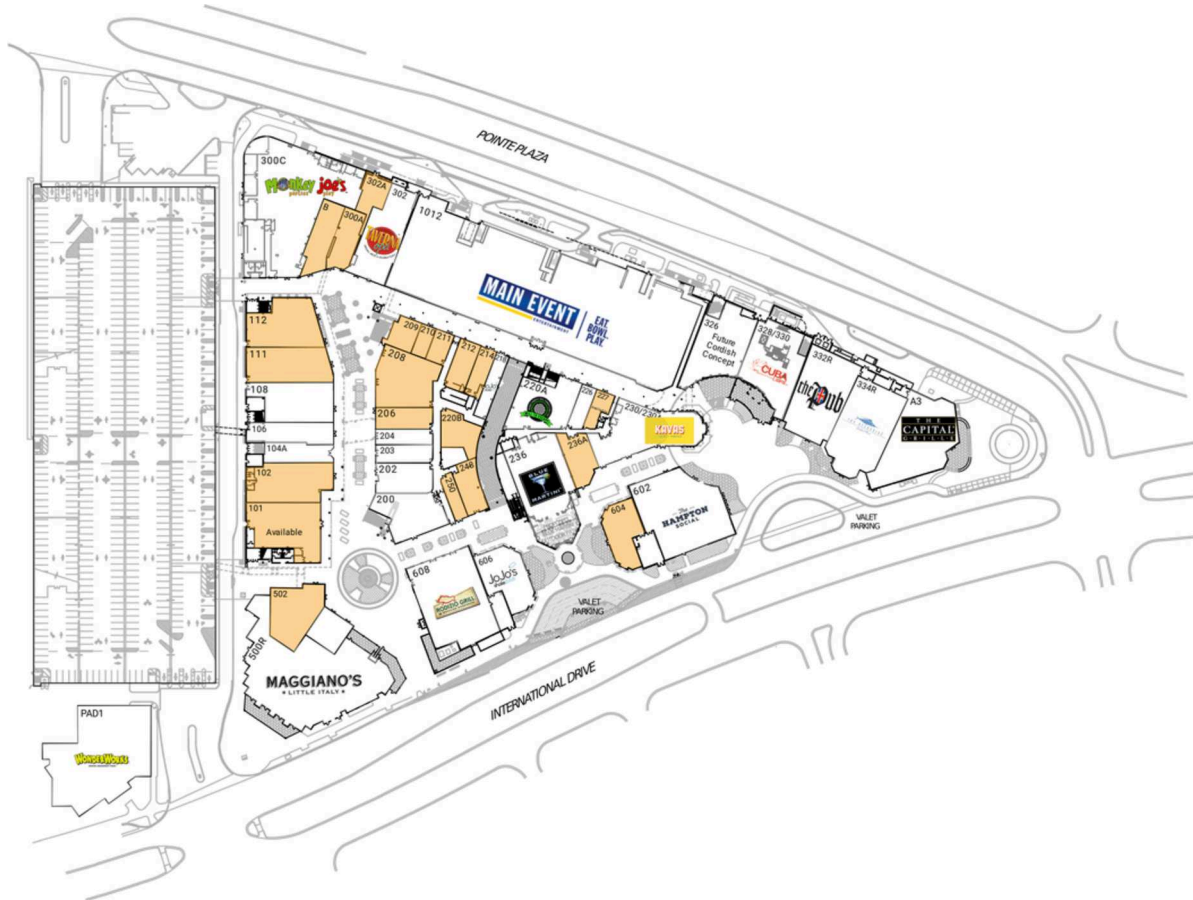
1171

# Pointe Orlando

Orlando-Kissimmee-Sanford, FL

28.4324, -81.471

9101 International Drive | Orlando, FL 32819



## Available Space

B	2,921 SF
101	6,500 SF
102	5,589 SF
111	4,790 SF
112	5,562 SF
206	2,158 SF
208	5,476 SF
209	1,541 SF
210	862 SF
211	1,053 SF
212	1,923 SF
214	1,486 SF
220B	2,346 SF
227	790 SF
236A	2,110 SF
248	1,608 SF
250	1,086 SF
300A	2,484 SF
302A	1,831 SF
502	4,888 SF
604	3,561 SF

## Current Retailers

A3	Capital Grille	9,020 SF		Concept	
PAD1	WonderWorks	24,506 SF	328/330	Cuba Libre	18,188 SF
104A	Strategic Artifex	2,259 SF		Restaurant & Rum Bar	
106	Red Pedi	3,006 SF			
108	Bowes Signature Candles	5,265 SF	332R	The Pub	7,975 SF
			334R	The Oceanaire	8,500 SF
200	Moondance Trading	4,486 SF	500R	Seafood Room	
				Maggiano's Little Italy	16,400 SF
202	FLOW	3,081 SF			
203	DBU Fashion	1,836 SF	504	Tharoo & Company Jewelry Boutique	2,084 SF
204	One For The Road	1,527 SF			
218	Jojo's Shake Bar	2,000 SF			
220A	Will To Escape	5,376 SF	602	The Hampton Social	10,763 SF
226	Digital Center	1,203 SF			
230/	Kavas Taco Y	7,254 SF	606	Jojo's Shake Bar	4,471 SF
230A	Tequila		608	Rodzio Grill	7,030 SF
236	Blue Martini	7,205 SF	1012	Main Event Entertainment	48,341 SF
300C	Monkey Joe's	17,250 SF			
302	Taverna Opa	6,464 SF			
326	Future Cordish	6,483 SF			